



# **Wireless - N USB Adapter Range Extra**

## **Quick Installation Guide**

**Model # AWN-11N-USB**

# 1. Introduction

Thank you for purchasing Wireless LAN USB Adapter. Wireless LAN USB Adapter is a perfect combination of both performance and cost-effective product introduced. It is sincerely hoped that you can enjoy the wireless world through this solidly profiled wireless adapter.

It provides a full solution of all the IEEE 802.11 b/g/n protocols, that pass the WiFi tests and are compatible with all the wireless products with WiFi logo. If you have a Wireless LAN USB Adapter on hand, it means you can connect to the wireless world without any difficulty.

It also provides all the data rates in the IEEE 802.11 b/g/n standards, with both short and long preambles to ensure the compatibility of legacy wireless products and new ones, saving the panic works for end users to find compatible products.

Since the security issue has become one of the most important one in the wireless society, it provides you with the full security coverage from the 64/128bits WEP encryptions, second generation WPA-PSK encryption, to the most advanced WPA2-AES encryption. WPA2 is the latest security standard currently approved by WiFi standards.

## 1.1 Features

- Compatible with 802.11n draft specification version 2.0
- Backward compatible with 802.11b/g devices while operating at 802.11n data rate
- Data rates of up to 150 Mbps
- Embedded MIMO technology improves effective throughput and range over existing Wi-Fi products
- 802.11e-compatible bursting
- USB 2.0 connector

## 1.2 Specifications

- Support IEEE 802.11b/g & Draft IEEE 802.11n
- Detachable 2dBi Antenna, (Upgradable to 5dBi , AWA-5DBI)
- 2.4GHz~2.484GHz
- Orthogonal frequency division multiplexing (OFDM)
- Direct Sequence Spread Spectrum (PBCC, CCK, DQPSK, DBPSK)
- Security: 64/128bit WEP / WPA / WPA2 (TKIP/AES)
- Output Power: 802.11n: 15dBm (Typical) $\pm$ 1, 802.11g: 16dBm (Typical) $\pm$ 1, 802.11b: 20dBm (Typical) $\pm$ 1
- Data Rate (Mbps): 802.11n: 150, 54, 48, 36, 24, 12, 9, 6, 11, 5.5, 2, 1 (Auto Rate Sensing)
- Compatibility: 802.11g: 54, 48, 36, 24, 18, 12, 9 and 6Mbps with auto-rate fall back, 802.11b: 11, 5.5, 2, and 1Mbps with auto-rate fall back
- Sensitivity: 54Mbps:-68dBm, 11Mbps:-80dBm,
- Operation Mode: Ad-Hoc / Infrastructure
- Operating Voltage: 5V
- Host Interface: USB 2.0

- Operating Temperature (C°): 0~60 ambient temperature
- Storage Temperature (C°): -20~70 ambient temperature
- Storage Humidity: 10%~90% non-condensing
- Operating System Support: Windows 2000, XP 32/64, Vista 32/64
- Approvals: FCC Part 15, CE

## 2. Installation Procedure

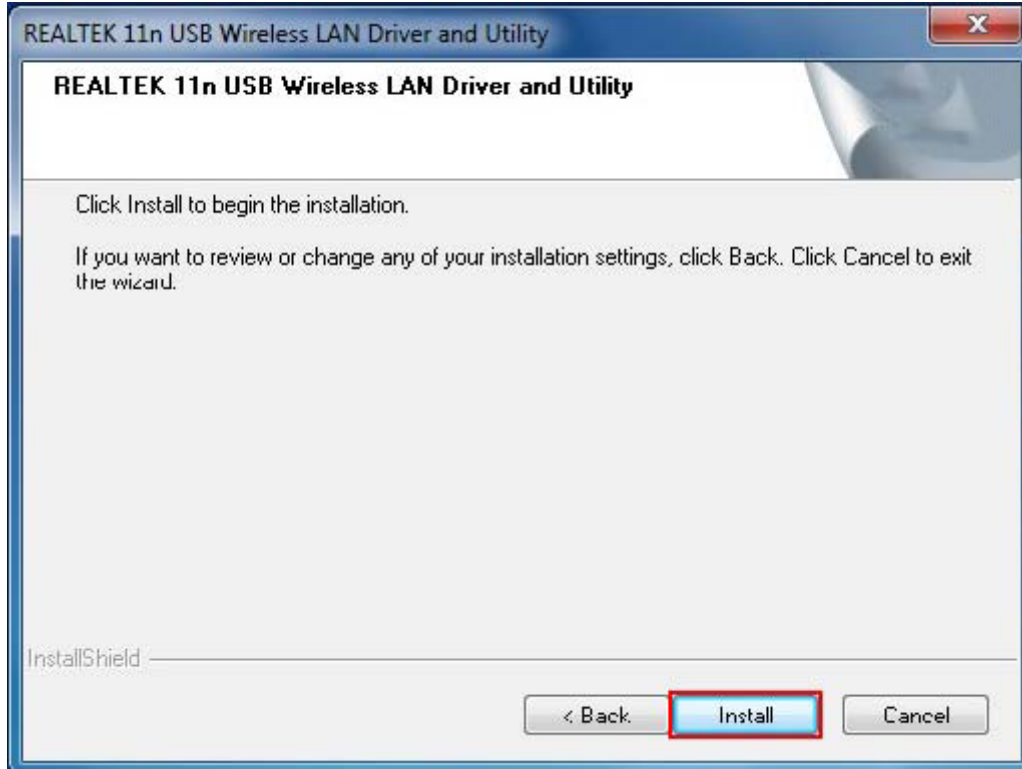
**Note:** *The following installation was operated under Windows 7. (Procedures will be same for Windows Vista, XP and 2000 Operation System).*

**Step 1:** Insert Wireless USB Adapter Installation CD into CD-ROM drive, a window will appear. Click **Install Driver & Utility** to begin device driver installation.

**Step 2:** Select the language for this installation from the choices and click **Next>** to continue.

**Step 3:** The InstallShield Wizard will install Wireless LAN Driver and Utility on your computer. For next step, click **Next>** to continue.

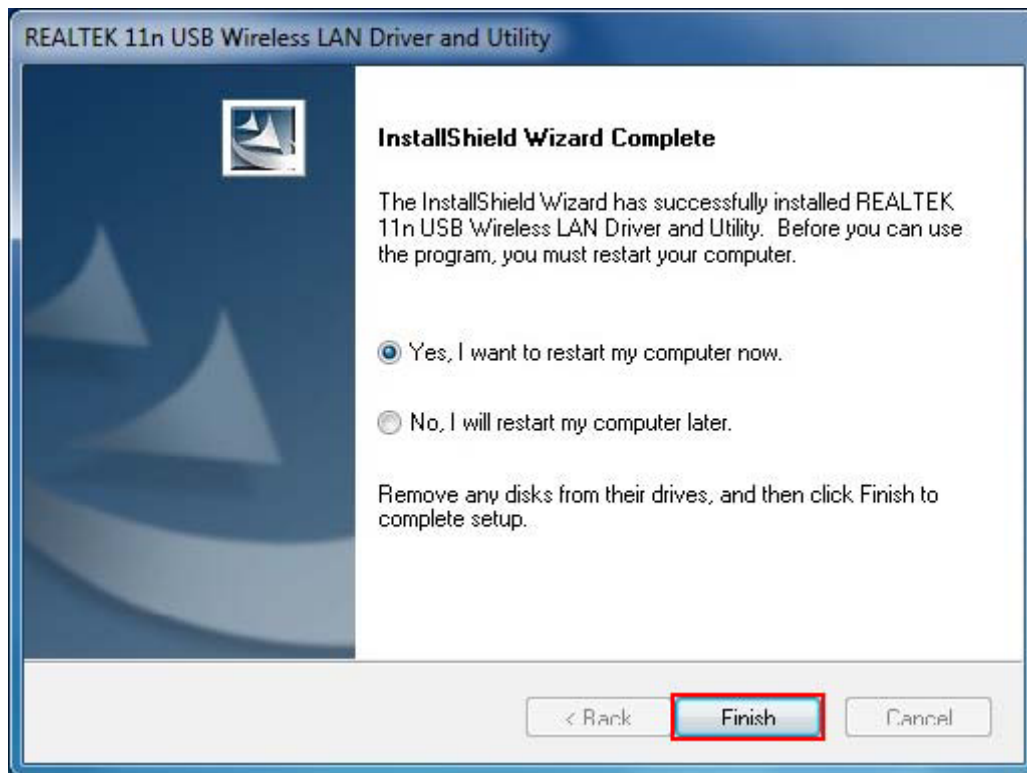
**Step 4:** Click **Install** begin the installation.



**Step 5:** Please wait for a while for installing process.



**Step 6:** After Wizard has finished the installing, choose “**Yes, I want to restart my computer now**” before you can use the utility. And then, click **Finish** to complete the setup.



**Step 7:** When Utility setup is completed, a shortcut of Wireless LAN Utility will appear in the computer’s desktop. Double click the shortcut and start using the WLAN USB adapter.



To check if Wireless PCI card is properly installed, you can right-click **Computer** → choose **Properties** → click **Device Manager**.

**NOTE:** For detailed information of Device Driver & Utility installation, please refer to the user’s Manual included in the Installation CD.