



**Wireless 802.11g, 54Mbps
PCI Adapter**

Quick Installation Guide

Model# AWN-PCI-54R

1. Install the Device

STEP 1: Turn off your computer and remove its cover

STEP 2: Insert the PCI card to an available PCI slot firmly.

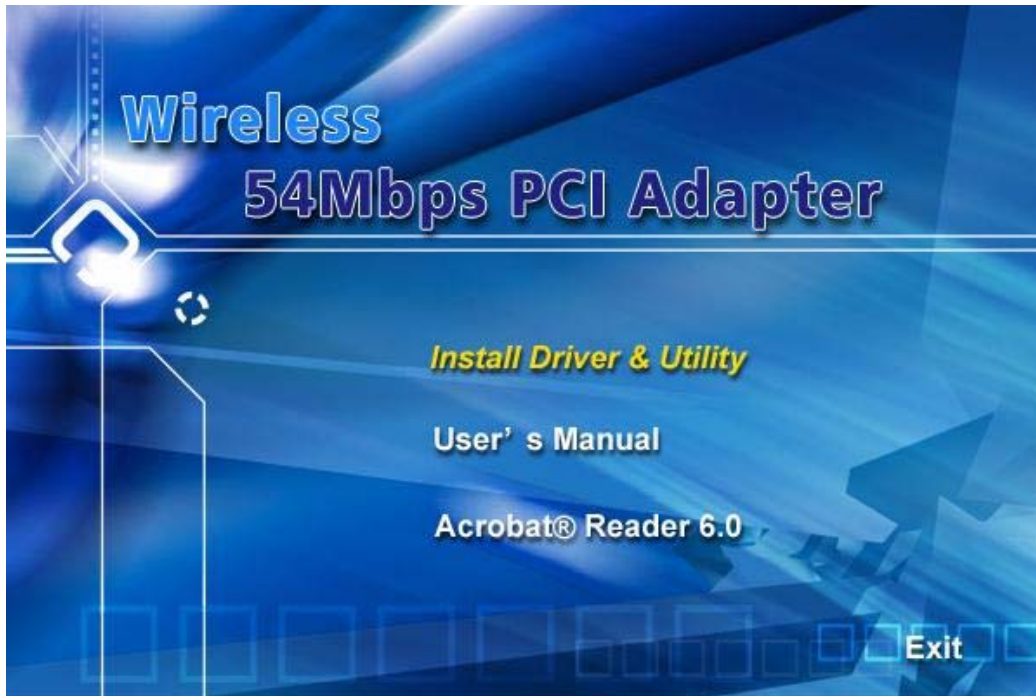
STEP 3: Secure this card to the rear of the computer chassis and put back the cover.

STEP 4: Secure the antenna to antenna connector of the card.

STEP 5: Turn on the computer.

2. Install Driver & Utility

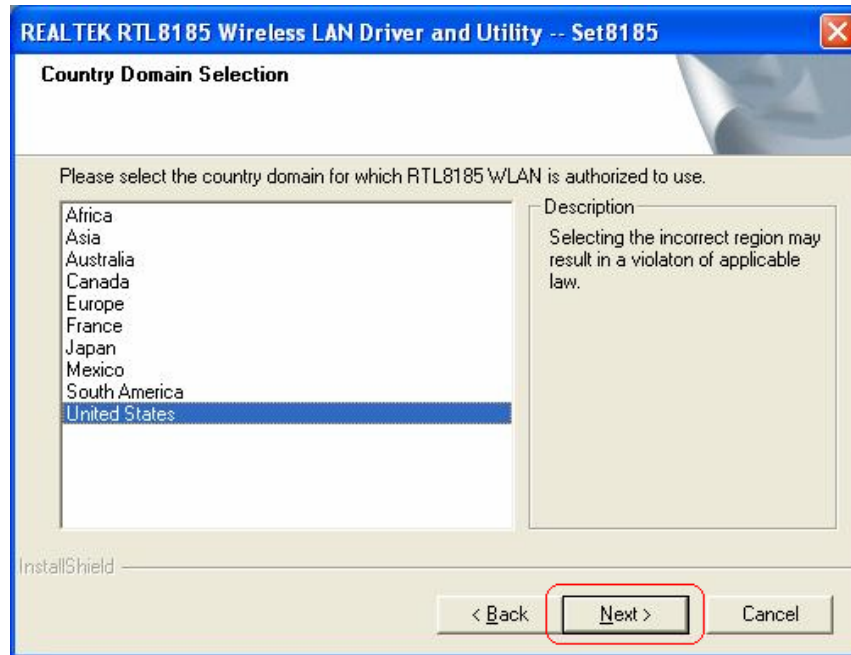
STEP 1: Insert Wireless 54Mbps PCI Adapter Installation CD into CD-ROM drive then windows below will appear. Click **Install Driver & Utility** to begin device driver installation.



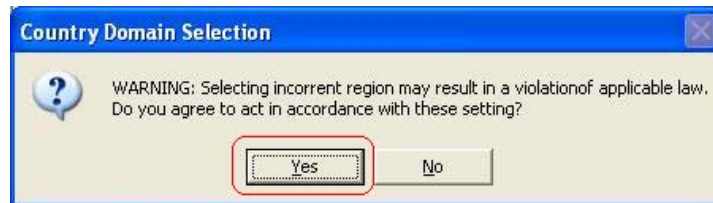
STEP 2: Select the language for this installation from the choices and click **OK** to continue.

STEP 3: The InstallShield Wizard for Realtek Wireless Network Utility will display, click **Next>** to continue.

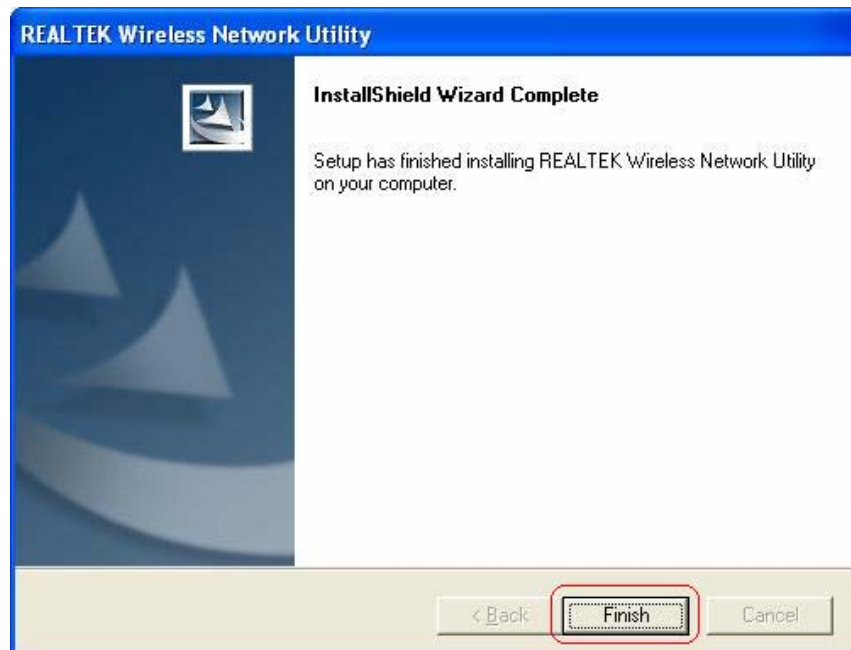
STEP 4: Select the country domain is authorized to use click **Next>** to continue.



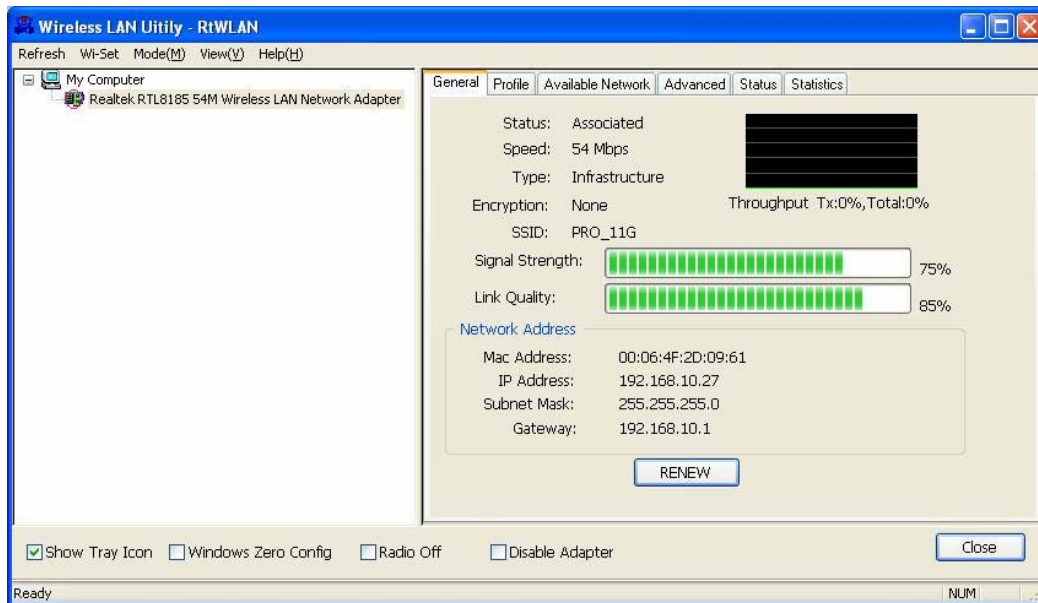
STEP 5: Click **Yes** to continue.



STEP 6: Click **Finish** to complete the software installation



STEP 7: When Utility setup is completed, the Wireless LAN utility's main page will automatically show up on your screen. You can refer to the manual in the CD for the detail configuration.



<Hint>

1. For Windows 98SE and ME, you need to restart your system when Utility setup is completed.
2. Windows 98 Second Edition CD is necessary when you install the driver.
3. You can refer to the manual in the provided CD for the detail configuration.