



**MIMO 802.11g Wireless  
LAN Adapter**

**Quick Installation Guide**

Model # [AWN-MIMO-54RA](#)

## 1. Install the Device

STEP 1: Turn off your computer and remove its cover

STEP 2: Insert the PCI card to an available PCI slot firmly.

STEP 3: Secure this card to the rear of the computer chassis and put back the cover.

STEP 4: Secure the antenna to antenna connector of the card.

STEP 5: Turn on the computer.

## 2. Install Driver & Utility

**STEP 1:** **Found New Hardware Wizard** is displayed after the adapter is plugged. Please click **Cancel** to continue.

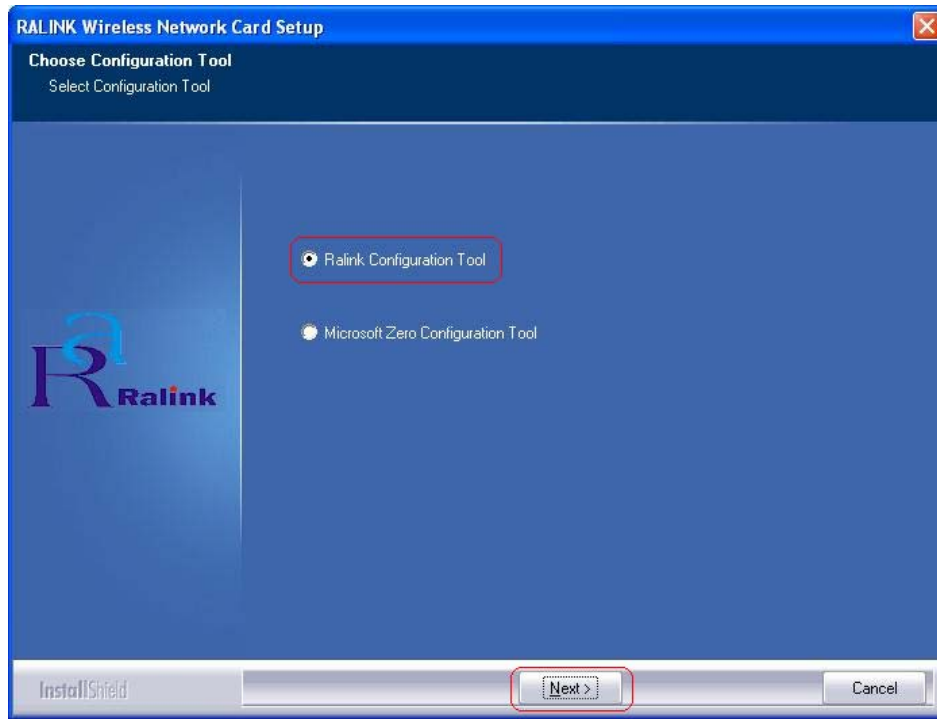
**STEP 2:** Insert Installation CD into CD-ROM drive then windows below will appear. Click **Install Driver** to begin device driver installation.



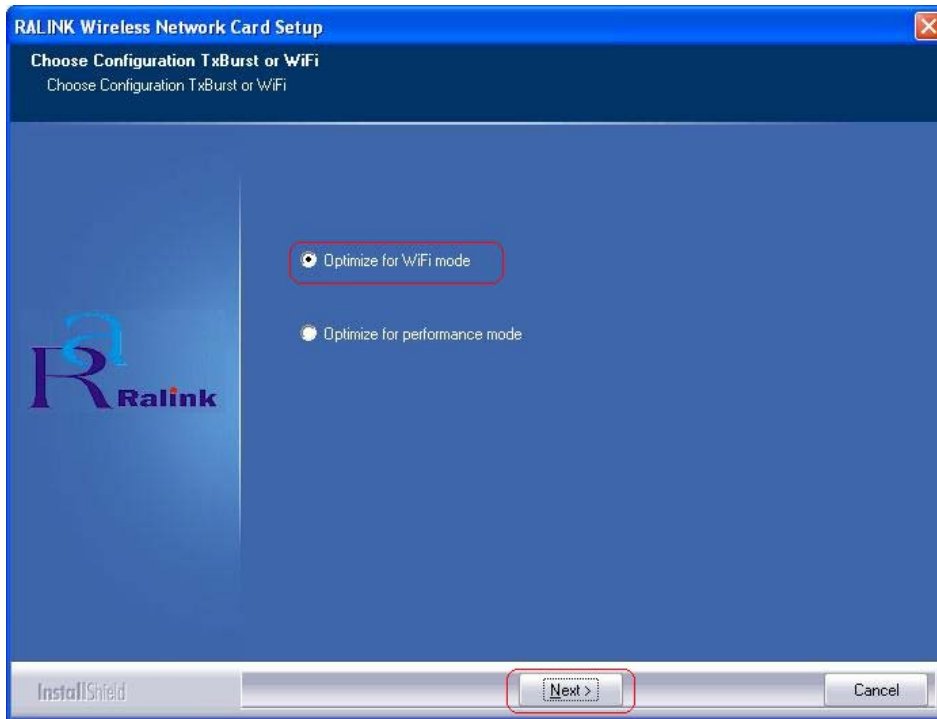
**STEP 3:** Please wait for a while during the Setup Wizard is preparing the setup.

**STEP 4:** Please read the license agreement. Use the scroll bar to view the rest of this agreement. Click **Yes** to accept the agreement.

**STEP 5:** Please choose **Microsoft Zero Configuration Tool** or **Ralink Configuration Tool (recommended)** to configure the adapter. Click **Next** to continue.

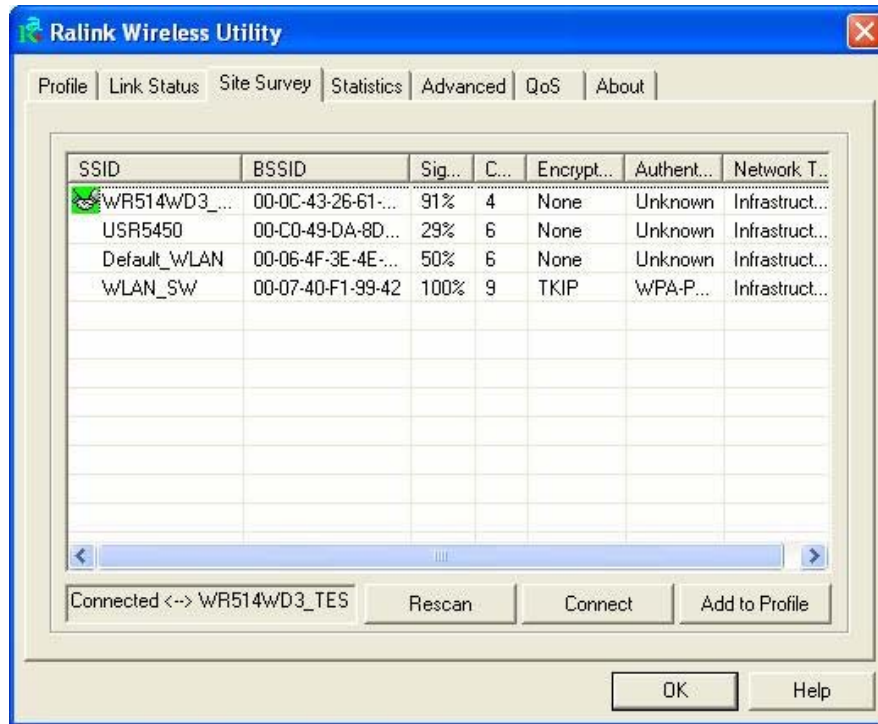


**STEP 6:** Please choose **Optimize for performance mode** to enable the **Tx Burst mode** for better performance. Or you can choose **Optimize for WiFi mode** to run in standard wireless network.




**STEP 7:** Please wait for a while during the adapter is configuring your new software installation.

**STEP 8:** When the adapter is installed properly, the configuration utility will be displayed automatically.



**STEP 9:** Please restart your computer after the installation has finished. Choose **Yes, I want to restart my computer now** and click **Finish** button.

The Configuration Utility appears as an icon  on the system tray of Windows while the adapter is running. You can open the utility by double-click on the icon.