



USB TV Tuner with FM Radio

Quick Installation Guide

Model # ATV-U800-FM

USB TV Tuner with FM

General

This manual will provide quickly installation information. If you want know more about application software, please refer relative software manual.

Product Features

- With innovated video decode chipset to keep the video quality
- Use active vectors estimate arithmetic to make curve fluent and color nature
- High integration and silicon turner II, integrate audio stream multi channels decoder technology with stereo sound output to keep the same speed between video and audio
- 10 Bit Video Decoder enhance image quality
- Worldwide TV standards, support NTSC/PAL
- Support FM.

Function

- Watching and recording TV programs.
- Receiving and playing all Analog channel supplement
- Capture Image and turn to MPEG1/2 file.
- Video Optimize technology
- Snapshot: Capture program picture living
- Window scaling: Can change between the full screen and in one window
- Schedule recording: weekly, daily, monthly, you can set timer and/or recording specific channel at specific time
- Time-Shift function: Time-shifting lets you pause, replay during live TV, without interrupting an ongoing recording session
- Automatic scan channel and delete no signal channel.

Application

- Watch TV on laptop
- Video-audio E-mail
- Video-audio animation record and edit
- VCD/DVD

System Requirements

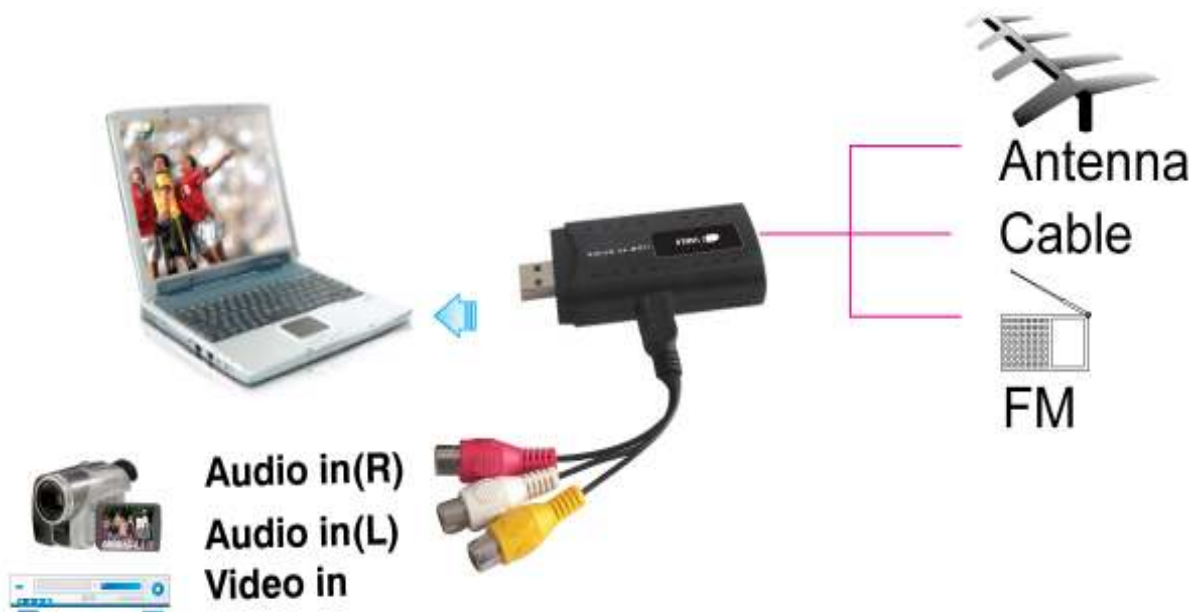
- ◆ P4-2.0GHz CPU or higher
- ◆ 256 MB RAM (minimum), or 512 MB RAM (recommended)
- ◆ VGA card with 32MB
- ◆ CD-ROM
- ◆ Microsoft DIRECTX9.0 or higher
- ◆ Windows XP Service Pack2/Vista
- ◆ One free USB2.0 port

- ◆ Available 50M HDD (install driver and application), add 600M/h-3G/h for recording

Package Contents

- USB TV Tuner w/FM
- Remote Control
- USB2.0 cable
- AV input Cable
- Software CD (Included Manual)

USB TV Tuner Connection:



Driver and Software installation

Driver and Software installation

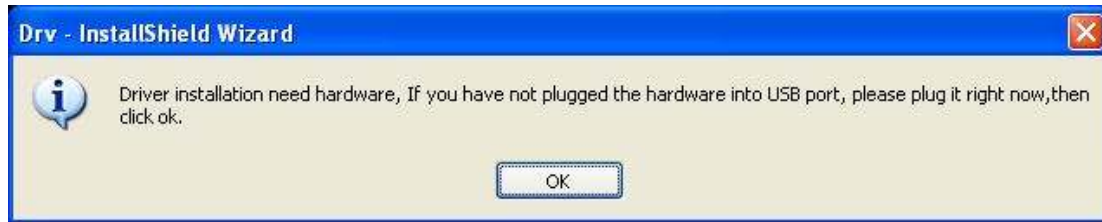
Step 1: OS will remind a new hardware-- "New Hardware Device" was found. Please choose "Cancel",



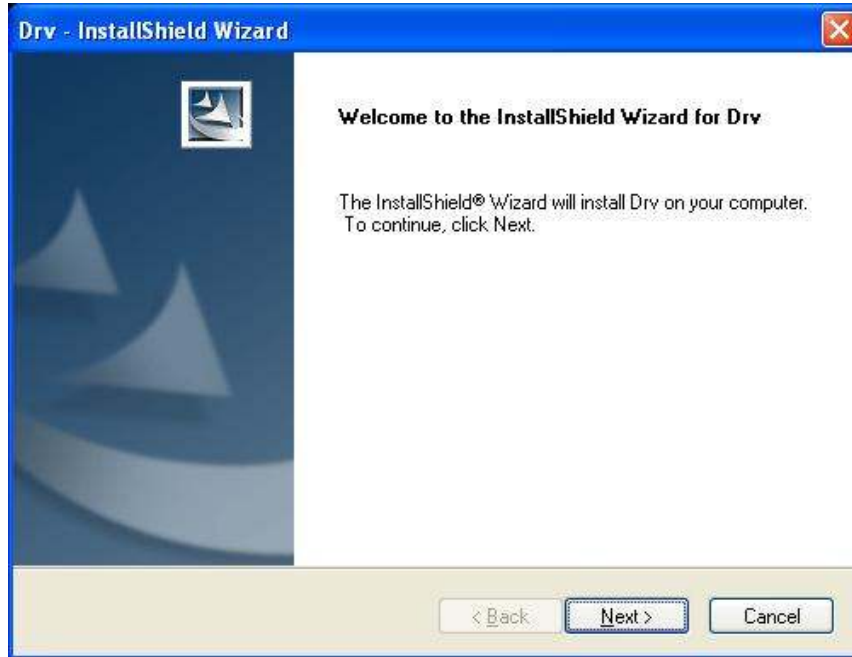
Step 2: When CD is inserted, OS will guide you to the setup automatically. Click "Driver Install" or run Driver\Setup.exe,



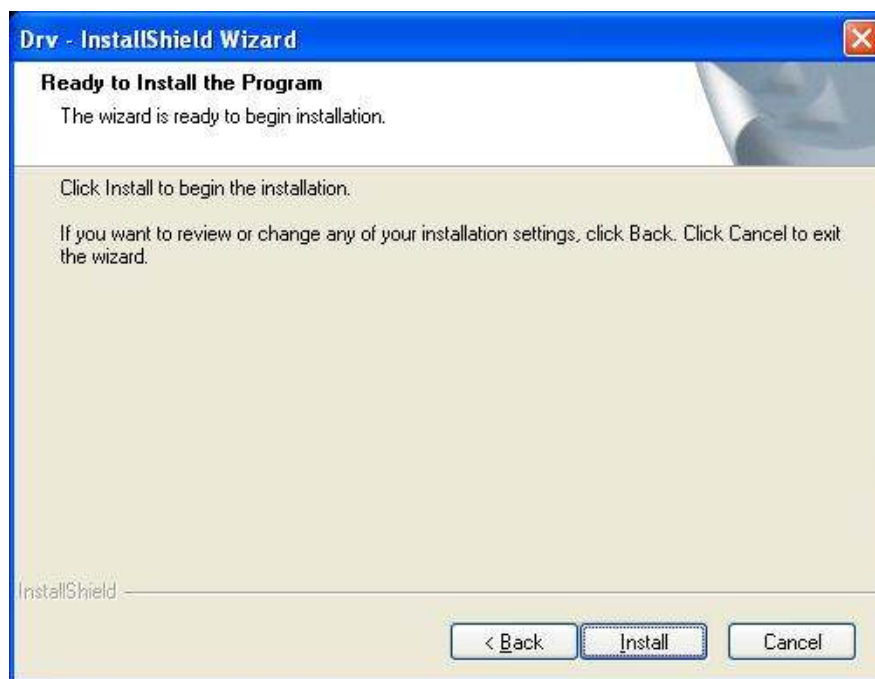
Step 3: Note whether it is correct to connecting device, If correct connecting, please click "OK".



Step 4: Click "next" to continue installation



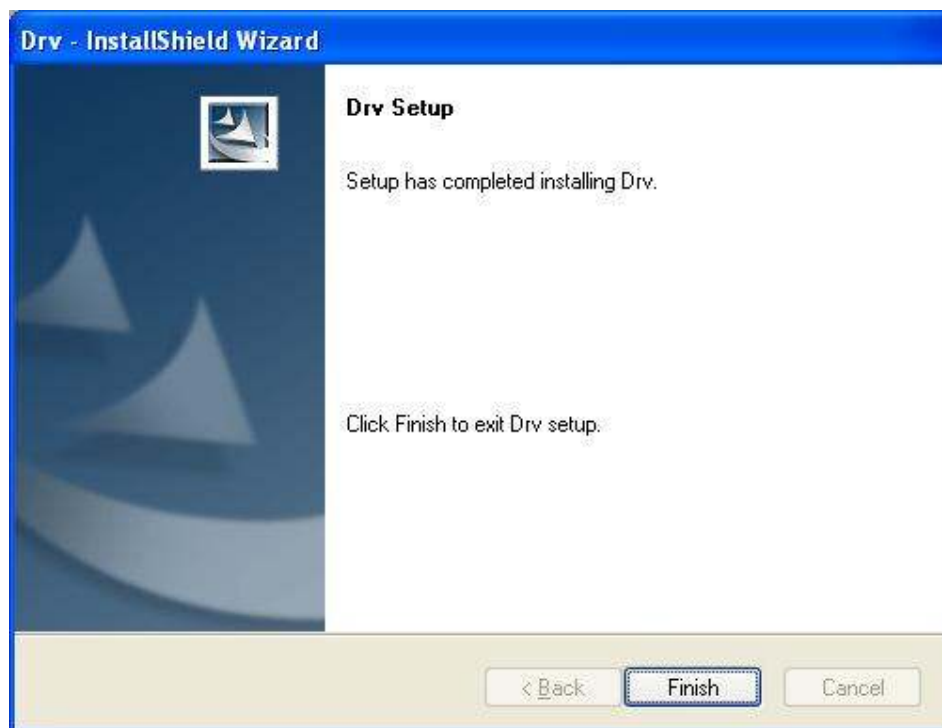
Step 5: Click "Install" to continue driver installation



Step 6: OS will prompt to install devices, Click “Continue Anyway”



Step 7: Click “Finish” to completely install the Driver



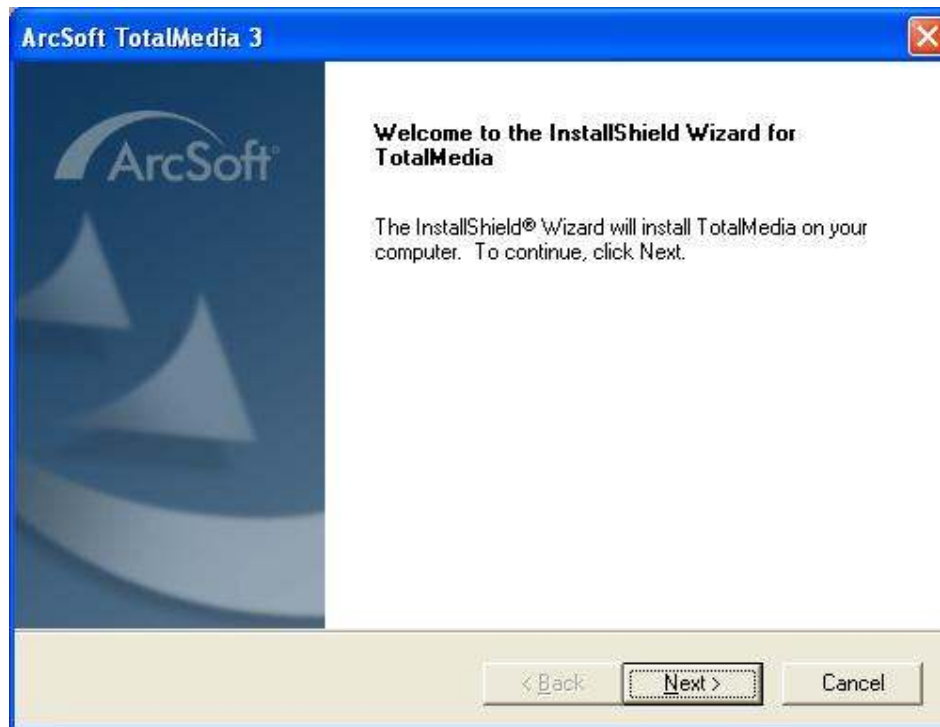
Installing TotalMedia

Click “**Software Install**” or run **TotalMedia\Setup.exe** and **TotalMedia Remote\Setup.exe**

Step 8: Installation of Total Media, Choose setup language



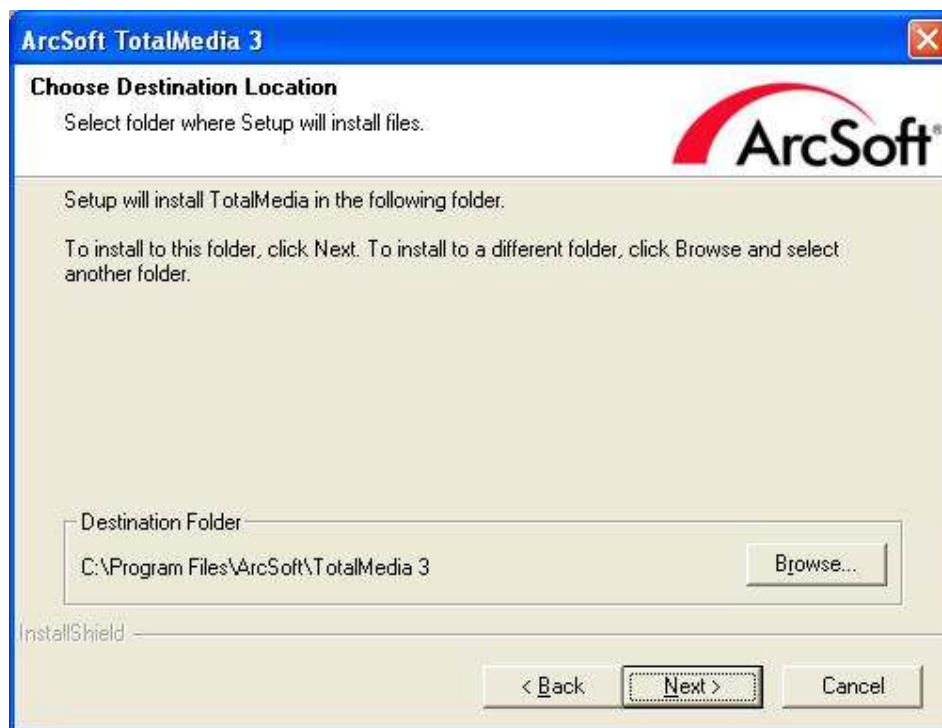
Step 9: Click “**Next**” to continue installation



Step 10: Click “Yes” to install “Arcsoft TotalMedia”



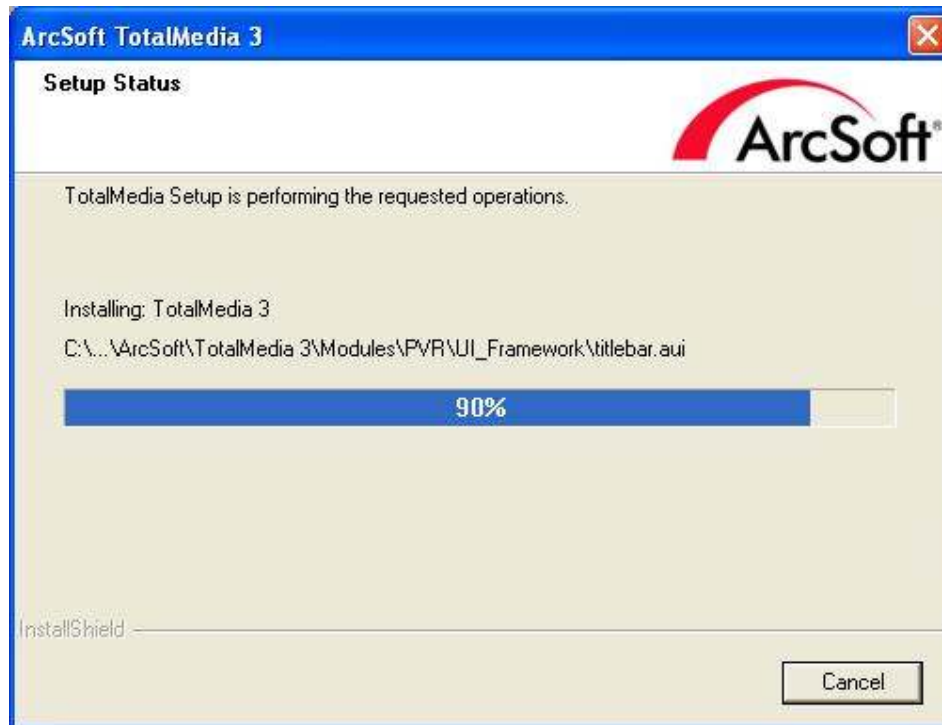
Step 11: If you want to change the destination folder, please click “Browse” and click “next” (if not, just click next)



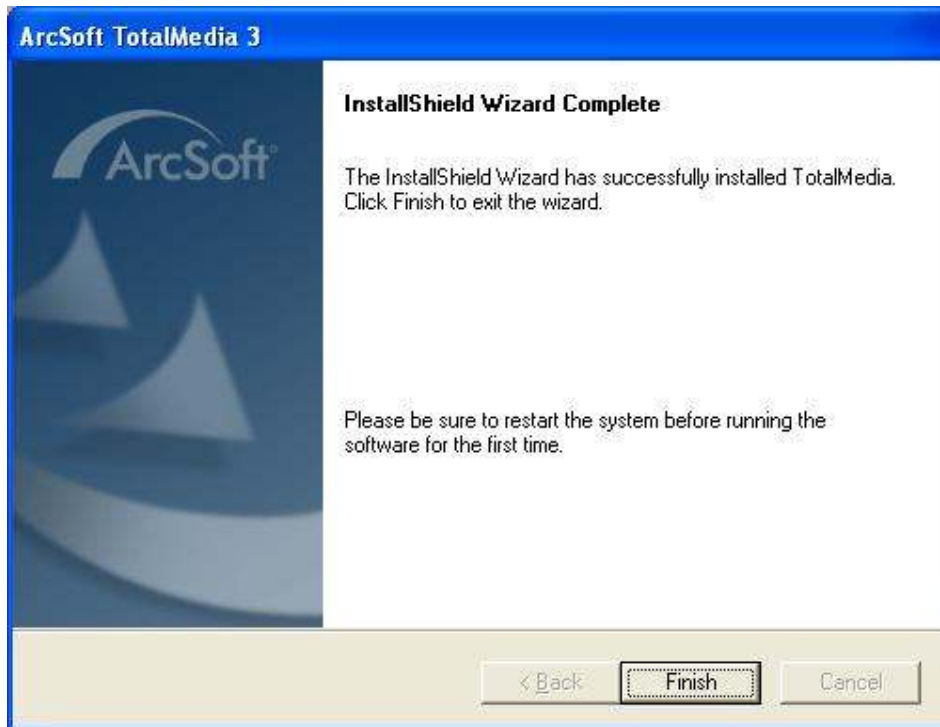
Step 12: Please click “Next”



Step 13: Wait while the files are copied to your computer.



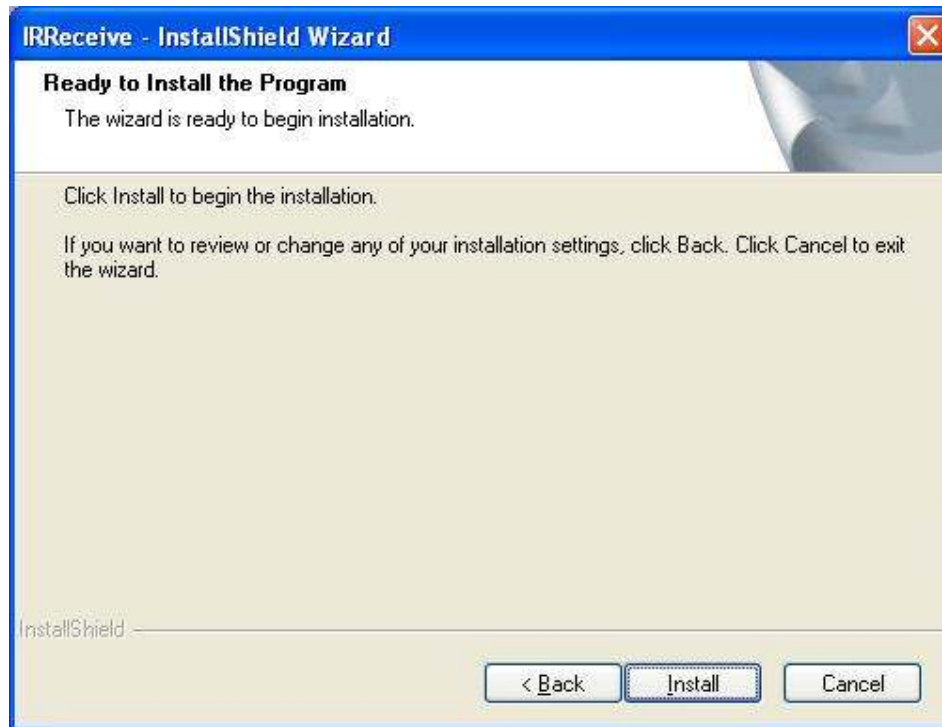
Step 14: Click **“Finish”**, the Arcsoft TotalMedia software is installed on your computer.



Step 15: Click **“Next”** to continue installation of **“IR Receive”**



Step16: Click **“Install”** to initiate the installation of the **“IR Receive”**



Step 17: Click **“Finish”**, the IR Receiver software is installed on your computer. System will inform you to restart PC.



Step 18: You will see that application icons will appear on your desktop.

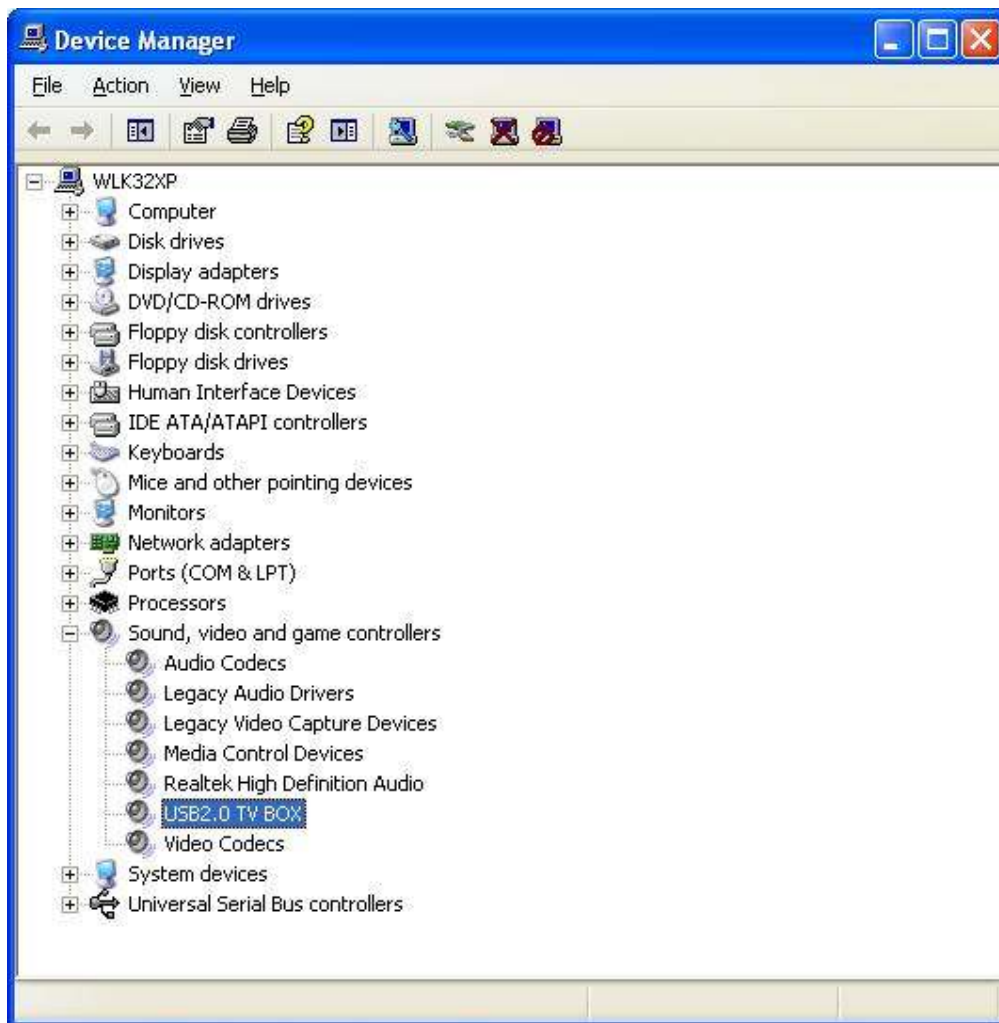


Step 19: You will see **TotalMedia3 Remote** icons in the icon tray as show below



Step 20: When all is finished, please check on Control panel, select “System”—“System properties”—“Device Manager”, you can see one device installed.

USB 2.0 TV BOX



Arcsoft Total Media

How to use TotalMedia, you can get online help.

Remote control handset (Total Media)



1	MUTE: On/Off volume mute
2	TV/AV: Switch between Composite and TV
3	Full Screen/Restore: Switches from full screen to the default screen
4	TotalMedia: Open/Close TotalMedia Software
5	0 - 9: Channel Number Keys
6	ESC: Return
7	Time-Shifting: Time-Shifting function
8	Up/ Down / Left / Right OK
9	CH+/CH-: Channel Up/Channel Down VOL+/VOL-: Volume UP/Volume Down
10	Record: Record/Stop recording the current program Stop: Stops pre-recorded viewing and returns to live TV Snapshot: Takes a picture of what is on screen

FAQ:

Q1: Why is the image inconsistent?

- A1: 1. Please try others USB slot in your PC.
2. Please check If the OS requirement is lower than the minimum request.
3. DirectX Show. Please check if the VGA card supports Direct Show.
4. Please Upgrade your PC to Windows XP Service pack2.

Q2: Why does the driver doesn't get installed?

- A2: 1. Please check if the name of Facility Management is USB TV Stick.
2. Update DIRECTX9.0C is belonging to CD.

Q3: Why I can not see the image?

- A3: 1. Try to pull out reinsert application.
2. Try to reinstall driver.

Q4: Why do the color and sound have problem when watching TV?

- A4: Please check if the "Country and Zone" is correct.

Remark: The accessories and bundled software may not be the exactly same as this manual. The specifications are subject to change without notice.