



## **TV Capture Card**

# **Quick Installation Guide**

**Model # ATV-TUNER-FV**

**FCC Warning**

This equipment has been tested and found to comply with the limits for a Class-B digital device, pursuant to Part 15 of the FCC Rules. These limitations are designed to provide reasonable protection against harmful interference in a residential installation. This equipment generates, uses and can radiate radio frequency energy and, if not installed and used in accordance with the instructions, may cause harmful interference to radio communications. However, there is no guarantee that interference will not occur in a particular installation. If this equipment does cause harmful interference to radio or television reception, which can be determined by turning the equipment off and on, the user is encouraged to try to correct the interference by one or more of the following measures:

**Reorient or relocate the receiving antenna.**

- a. Increase the separation between the equipment and receiver.
- b. Connect the equipment into a different outlet from that the receiver is connected.
- c. Consult your local distributors or an experienced radio/TV technician for help.
- d. Shielded interface cables must be used in order to comply with emission limits.

Changes or modifications to the equipment, which are not approved by the party responsible for compliance could affect the user's authority to operate the equipment.

**Copyright**

2007 All Rights Reserved.

No part of this document can be copied or reproduced in any form without written consent from the company.

**Trademarks**

All trade names and trademarks are the properties of their respective companies.

## Introduction

Advantek Networks TV Capture Card is capable to capture video and audio signals then play on PC, it comes with user friendly GUI turning your PC into an entertainment center. Advantek Networks TV Capture Card application utility provides PIP (Picture-In-Picture) feature which user can record TV program or any video source while watching program. You can also listen and record radio broadcast if your capture card has FM connector.

## System Requirements

- Pentium III 700 MHz CPU or faster
- 128 MB system memory
- 700 MB free space on your hard drive
- Graphics card with minimum 16 MB memory
- AC97 compatible sound card
- CD-ROM drive
- One available PCI slot
- Operating system has DirectX 9
- Microsoft Windows 98SE, ME, 2000, XP or **Vista** 32 bit operating system disk  
(**Windows 2000 and XP are recommended**)

**Note:** For Time-Shifting function or Vista Operation System, Pentium IV 2.0GHz processor/512MB system/1G free space of HD/VGA card with 32 MB memory or higher is required.

## Features

- Supports NTSC/PAL/SECAM video decoding
- Compliant with PCI V2.2
- Plug and play compatible for easy installation and configuration
- Supports HDTV/audio/MPEG transport data across PCI bus
- Supports PIP (picture in picture): One screen for live and the other screen for captured program.
- Supports Time-Shifting: This feature allows user to pause, rewind and instant replay live TV program. Users can take breaks during a TV show or movie and will never miss a scene again.
- Supports Scheduled Recording, user can preset timer to record TV programs
- Supports mono audio decoding for both TV audio (BTSC) and FM radio
- Supports MPEG, AVI and Quick Time file formats
- Supports Windows Media Video & Audio, MPEG 1, JPEG , MP3 and Cinepak compression formats
- Offers infrared remote controller

## Package Content

- One TV Capture Card
- One user's quick guide
- One CD-ROM disk includes user's manual and device driver
- One remote controller with battery
- One AV and S-Video to S-Video cable
- One Audio Line Out to sound card cable
- One IR sensor cable
- One RF antenna cable (if the capture card has FM connector)

### Attention:

If any of above items is missing or damaged, please contact your local dealer immediately. In order to use the TV Capture Card application utility, you have to connect all cables or devices from the package.

## Hardware Installation

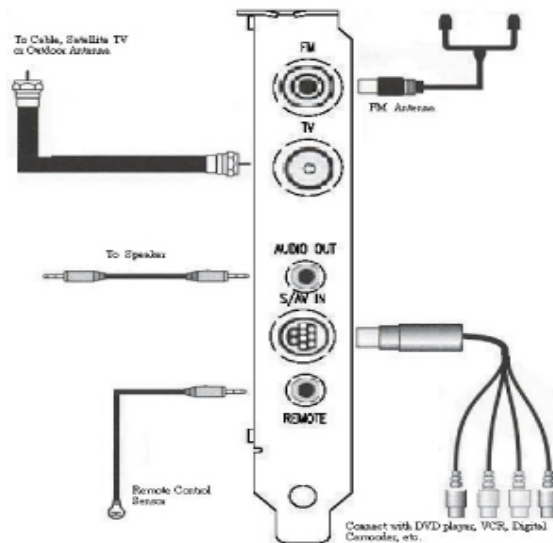
This Chapter describes how to install TV Capture Card hardware and cable connection.

### Hardware Installation Procedure

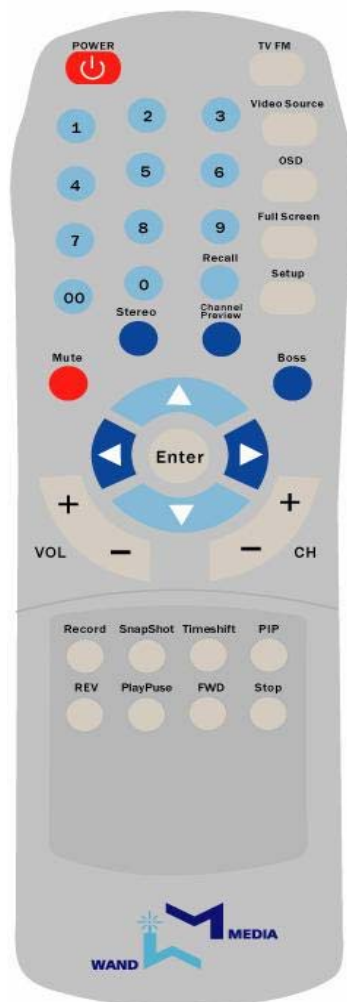
- Turn off the computer.
- Remove the system case.
- Insert the TV Capture card into an available PCI slot.
- Put system case back.
- Connect all cables
- Turn on the computer and follow the Device Driver & Application Utility installation procedure. Please refer to the user's manual included in the Installation CD.

**Warning:** Don't turn on your computer before all cables are plugged in. Any wrong doings might damage the hardware.

## Hardware Connection Diagram



## Remote Controller



**POWER** → Turn on or off capture card

**TV FM** → Switch between TV mode and radio mode

**Video Source** → Change video source

**OSD** → On Screen display

**Full Screen** → Change display screen between full screen and normal size

**Recall** → Go back to last channel

**Mute** → Turn on/off sound

**Channel Preview** → Preview channels simultaneously

**Boss** → To hide display panel

▲ ▼ → Move up/down through the menu

▼ ▲ → Move right/left through the menu

**Enter** → Confirm a choice

**VOL+** → Turn volume up

**VOL-** → Turn volume down

**CH+** → Channel up

**CH-** → Channel down

**Record** → Recording

**Snap Shot** → Take picture of playing frame

**TimeShift** → Start/End time shift

**PIP** → Turn on/off PIP function

**REV** → Play back

**Play Pause** → Temporary stop

**FWD** → Fast forward

**Stop** → Stop recording or playing

## Install DirectX 9

Before installing your new Media Wand TV Capture Card device, it is necessary to install DirectX 9 or higher for your Operating System. If your system already has DirectX 9, you can skip this part of installation. DirectX 9 is available on the installation CD included with your product.

- 1) Insert the CD into your CD-ROM driver and select **“Microsoft DirectX 9”** from the manual that appears.
- 2) In **“Installing Microsoft® DirectX®”** window, select **“I accept the agreement”**, and then click **“Next”** to continue.



- 3) Click **“Next”** to continue installation.
- 4) Waiting for the operating system finishes installing DirectX 9 components.
- 5) After operating system finishes loading driver, click **“Finish”** to restart your system.

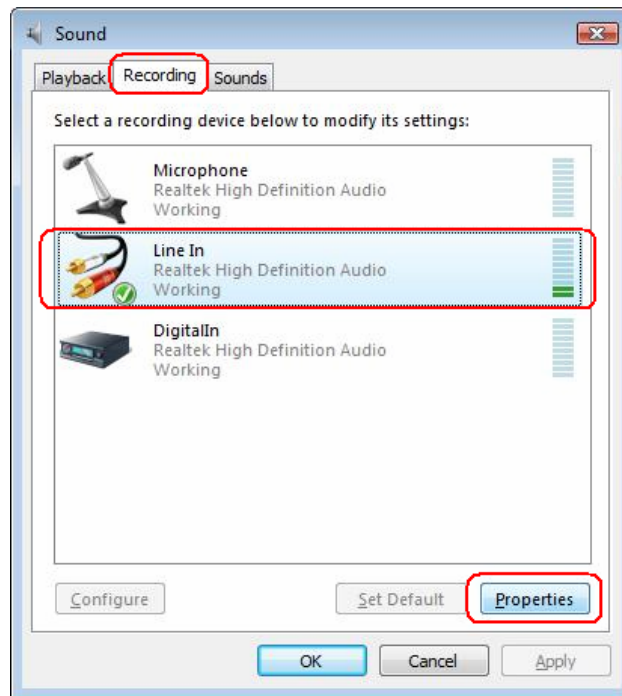
## Install Driver (Windows Vista)


Before install the driver in Vista OS, you must enable Sound's Line in function. Please follow the below procedures to check if the Line in function is enable or not.

(1) Go to **"Start" → "All Programs" → "Control Panel"**

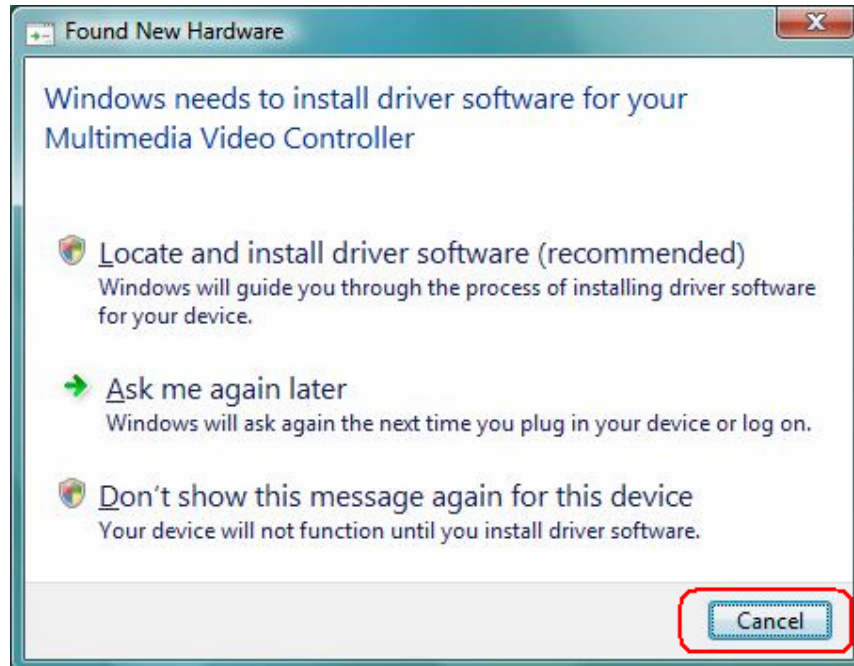
(2) Click **"Sound"** option.

(3) In **"Recording"** tab, you must make **"Line in"** as default setting. And then, click **"Properties"** to check the settings. (If the Line in is not default setting, select **"Line in"** and click **"Set Default"** button to change the default)



(4) In **"Line In"** properties, make sure Line in function **can't be mute** . And Line in balance value can be any number (1-100), **except 0**.

**Step1.** After complete hardware installation, turn on your system and boot into windows. When operation system detects TV capture card, **"Found New Hardware"** window will appear, then click **"Cancel"**.



**Step2.** Insert Installation CD and click “**Install Driver**” from Easy Setup program.



**Step3.** The Welcome Wizard will display as below, click “**Next**” to continue.

**Step4.** The Wizard is ready to begin installation, click “**Install**” to begin the installation.

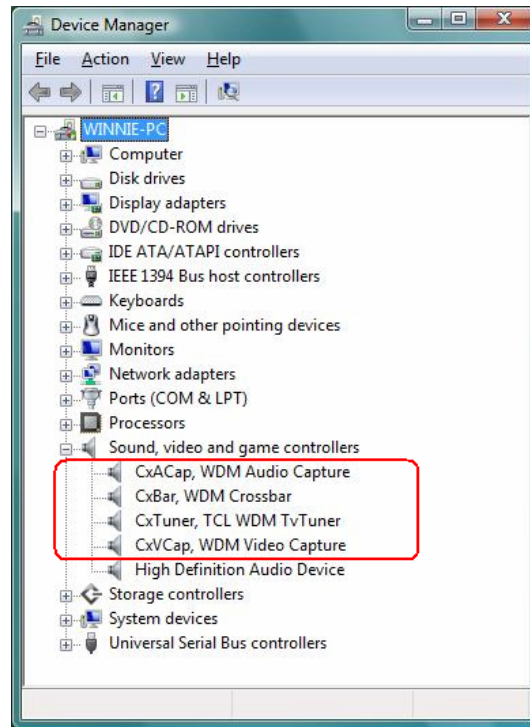
**Step5.** Please wait for while during the installation process.

**Step6.** Click “**Install this driver software anyway**” to go next step. (This window will appear 3 times and only for Windows Vista Operation System).



**Step7.** After the installation wizard has successfully installed the device driver, click “**Finish**” to exit the wizard.

**Step8.** To check if Media Wand TV Capture Card driver is properly installed:  
Click **Start** → **Settings** → **Control Panel** → **System** → “**Hardware**” tab → choose “**Device Manager**”.



### **Install Driver (Windows XP)**

**Step1.** After complete hardware installation, turn on your system and boot into windows. When operation system detects TV capture card, “**Welcome to the Found New Hardware Wizard**” window will appear, then click “**Cancel**”.

**Step2.** Insert Installation CD and click “**Install Driver**” from Easy Setup program.

**Step3.** The Welcome Wizard will display as below, click “**Next**” to continue.

**Step4.** The Wizard is ready to begin installation, click “**Install**” to begin the installation.

**Step5.** Please wait for while during the installation process.

**Step6.** Click “**Continue Anyway**” to go next step. (This window will appear 4 times and only for Windows Vista Operation System).



**Step7.** After the installation wizard has successfully installed the device driver, click **“Finish”** to exit the wizard.

**Step8.** To check if Media Wand TV Capture Card driver is properly installed:  
Click **Start → Settings → Control Panel → System → “Hardware”** tab → choose **“Device Manager”**.

#### [Install Medi-TV Application]

**Step9.** Execute the Easy setup program and click **“Medi-TV”** to begin the installation.



**Step10.** The welcome wizard will show as below, click **“Next”** to begin.

**Step11.** Click **“Install”** to begin the installation.

**Step12.** Please wait for configuring the software.

**Step13.** After the wizard has successfully installed, click "**Finish**" to exit the wizard.

**Step14.** After Medi-TV is installed completed, the desktop will create a shortcut for Medi-TV which calls "**TVTuner Application**".



**Step15.** To enable Medi-TV application, you can double-click the icon on the desktop; then, Select Country window will show. Choose your local **country name (by alphabet)** and click "**OK**" to continue.

**Step16.** When first time to lunch the TV Application, please select the type of the broadcast system and click "**Scan**" to scan all channels.

**Step17.** After few minutes and the TV Channels have scanned, you can start watch the TV program as your want.