



PCI TV Tuner with FM Radio

Quick Installation Guide

Model # ATV-TUNER-FM2

PCI TV Tuner with FM Radio

General

This guide describes the installation and basic usage of the ATV-TUNER-FM2. This guide will help you get started in using these products. If you require further information or troubleshooting information, please refer to the ATV-TUNER-FM2 User's Guide, which is available on the software CD and may also be installed on your PC hard disk.

Minimum System Requirements

- 400 MHz Pentium II or equivalent CPU and 128 MB RAM
- Sound Blaster or equivalent sound card
- One PCI slot
- CD-ROM drive for software installation
- Windows XP/Vista
- 10 MB free disk space for basic software installation

Recommended System Requirements

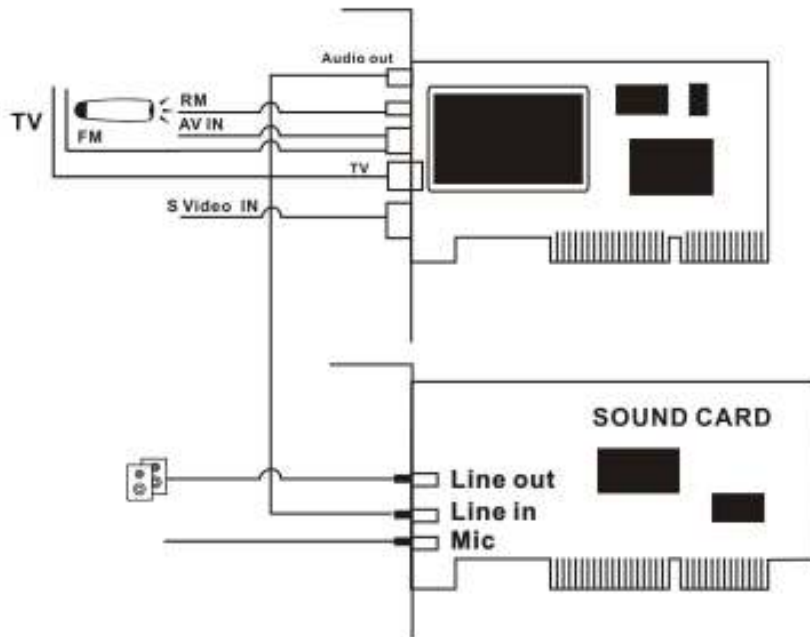
- 1.7 GHz Pentium 4 or equivalent CPU and 256 MB RAM
- Sound Blaster or equivalent sound card
- One PCI slot
- CD-ROM for software installation
- Windows XP with DirectX 9.0 installed
- 30 MB free space for software installation
- 600 MB to 3 GB per hour of recorded video

Package Contents

- PCI TV Tuner w/ FM
- Remote Control
- RM Cable
- FM Antenna
- Software CD
- Audio loop cable

- Battery

Connection



Driver and Software Installation

Driver Installation

Step 1: OS will tell you when it find a new hardware-- "New Hardware Device" was found. Please choose "Cancel"



Step 2: Insert the driver CD into CD-ROM, browse the CD, Click “Driver Install” or run Driver\Setup.exe, then press “next ” to continue



Step 3: Click “next” to continue installation

Step 4: Click “Install” to continue installation driver

Step 5: Installing TV Video Capture, Click “Continue Anyway”



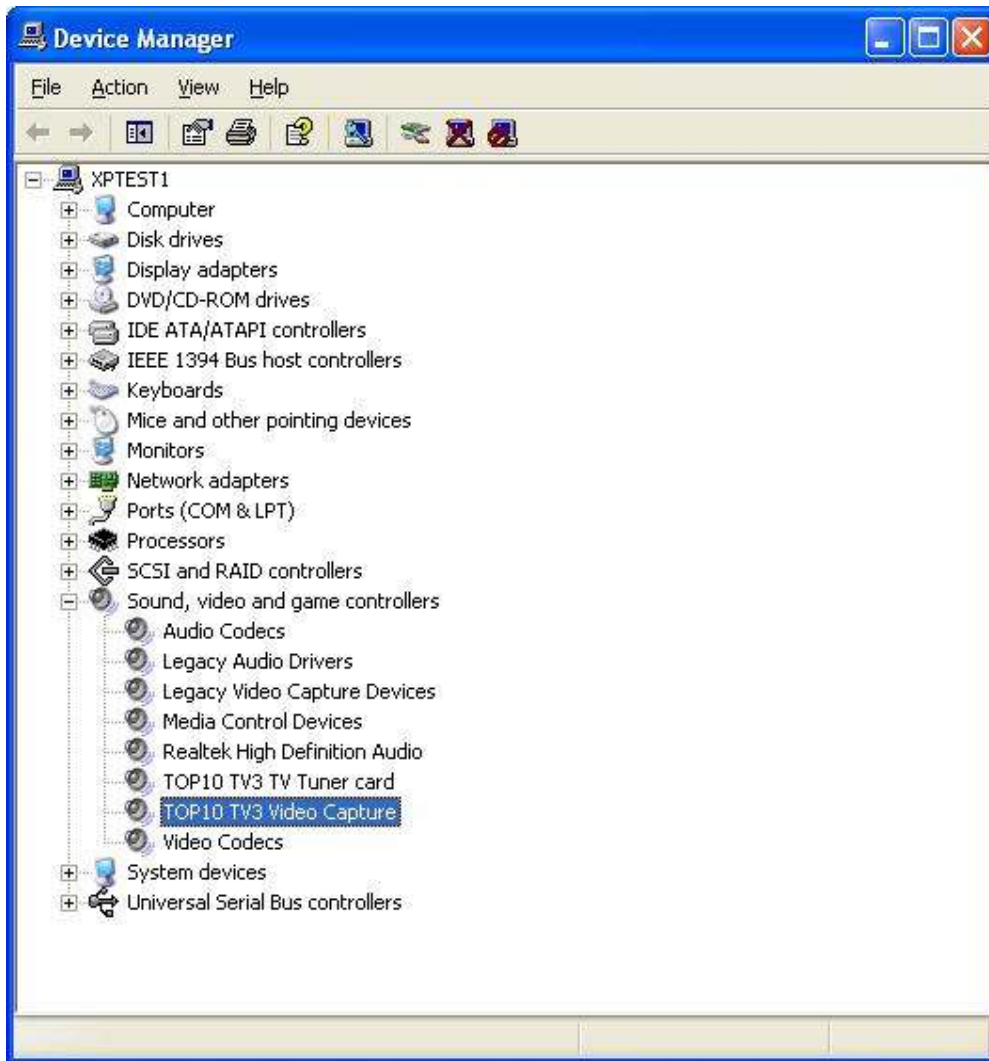
Step 6: Installing TV Tuner card, Click “Continue Anyway”



Step 7: When all finished, please check on open the control panel , select “**System**”, select“**system properties**”, select “**Device Manager**”, you can see four new device drivers installed.

TOP10 TV3 Video Capture

TOP10 TV3 TV Tuner card



Software Installation

Step 8: You can choose your prefer language, there are two option (Chinease and English)

Step 9: If u have not install DirectX9.0, OS will install DirectX9.0 automatically

Step 10: After DirectX9.0 installation finished, After installation the component, click "Next" to continue install "WinTVR3"

Step 11: Select which directory to install, just choose browse, or click "next" to select the default directory

Step 12: Choose install the components, and click “Next”

Step 13: Click “Next” to install WinTVR3

Step 14: Installation start to copy files to destination directory

Step 15: Auto promote install “Windows Media Format 9”, and click “Yes”

Step 16:Click “Yes” to continue “Windows Media Format 9” installation

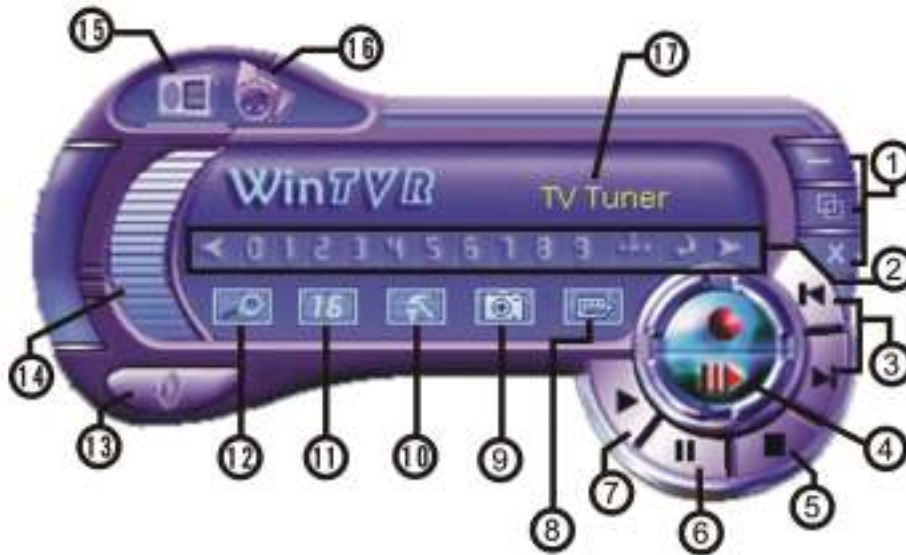
Step 17: Install MPEG4 plug-ins, Click “Continue Anyway” (Only Windows XP)

Step 18: System will prompt that system will restart, please click “Finish”

Step 19: These are the ICONS that will appear in your desktop.

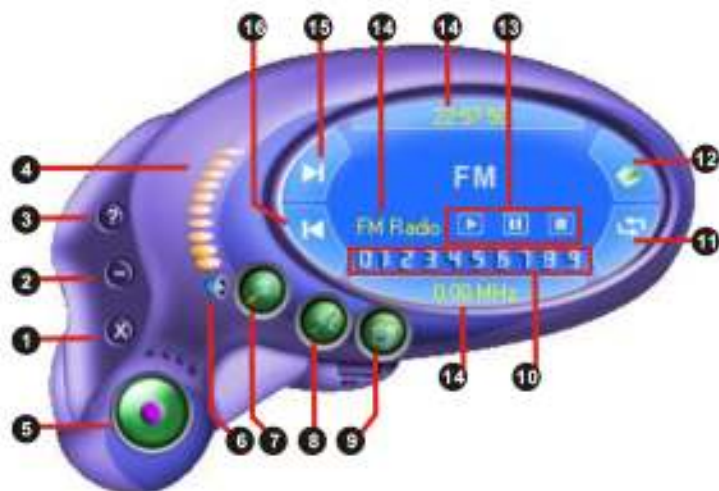


WinTVR User Interface



No.	Description	No.	Description
1	Minimize/Full Screen/Close	10	Settings
2	Channel Selection Keypad	11	16 Channel Preview
3	Step Backward/Step Forward	12	Auto Scan TV Channels
4	Record/Time-Shifting	13	Mute
5	Stop	14	Volume Control
6	Pause	15	Switch to FM
7	Play	16	Recording Schedule
8	Open Movie Clip	17	Current Status
9	Take a Snapshot		

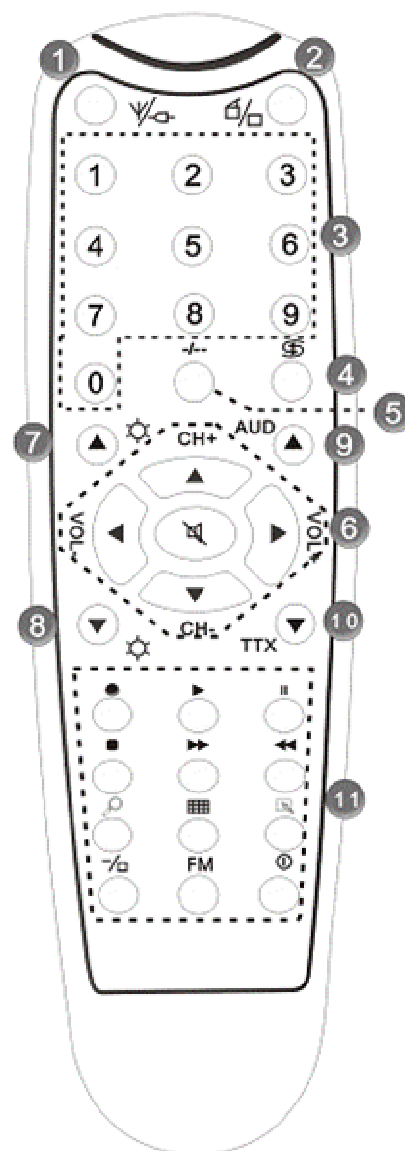
FM Interface Explanation



No.	Description	No.	Description
1	Exit FM	9	Shift to TV
2	Minimize	10	Channel digit key
3	FM copyright	11	Back to preview channel
4	Volume bar	12	Open recorded files
5	Start Record	13	Play recorded files Pause/stop recorded files Stop play next recorded files
6	Mute	14	Display window state
7	Auto scan channel	15	Jump to next channel
8	Setup menu	16	Jump to last channel

Remote Control and Key description

Key No.	Description
1	Switch input source: Switch from TV, Composite video and S-Video
2	Turn On/Off application software
3	Digital Keys
4	Return to previous channel
5	Single/double/triple digit
6	CH+.CH-: Channel Up/Down VOL+.VOL-: Volume Up/Down Mute
7	Brightness up
8	Brightness down
9	AUD: Stereo/Mono
10	TTX: Teletext
11	Record: Record/stop Play: Play recorded files Pause Stop/record Fast forward Back forward Auto scan channel Snapshot Setup menu Full screen window and video desktop switch FM: Power on/off: Exit WinTVR3



Note: This IR Remote can not be use on other devices: VCD or Satellite decoder device.