



Gigabit PCI Adapter

User's Manual

Model # ALN-318C

Copyright

Copyright © 2002 by this company. All rights reserved. No part of this publication may be reproduced, transmitted, transcribed, stored in a retrieval system, or translated into any language or computer language, in any form or by any means, electronic, mechanical, magnetic, optical, chemical, manual or otherwise, without the prior written permission of this company.

Disclaimer

This company makes no representations or warranties, either expressed or implied, with respect to the contents hereof and specifically disclaims any warranties, merchantability or fitness for any particular purpose. Any software described in this manual is sold or licensed "as is". Should the programs prove defective following their purchase, the buyer (and not this company, its distributor, or its dealer) assumes the entire cost of all necessary servicing, repair, and any incidental or consequential damages resulting from any defect in the software. Further, this company reserves the right to revise this publication and to make changes from time to time in the contents hereof without obligation to notify any person of such revision or changes.

All brand and product names mentioned in this manual are trademarks and/or registered trademarks of their respective holders.

Contents

1 Introduction 3
1.1 System Requirements3
1.2 Package Contents3
2 Hardware Installation Instructions 4
3 Software Driver Installation 5
3.1 Gigabit PCI Adapter Software Driver Installation Procedures.....5
3.1.1 For Windows ME, 2000 and XP.....	6
3.1.2 For Windows 98SE 9
3.1.3 For Windows 98 First Edition14
3.1.4 For Windows NT4.014
3.1.5 For DOS14
3.1.6 For Linux14
3.1.7 For Netware x15
3.2 Contact Information 15

1. Introduction

Gigabit PCI Adapter Installation CD is an All-In-One installation utility for Gigabit PCI Adapter. It automatically detects and installs recently installed Gigabit PCI Adapter hardware under Windows 98SE, ME, 2000, and XP. This utility includes Install Driver and User Manual two sections. Click Install Driver to start Gigabit PCI Adapter driver installation process. User Manual includes specification and hardware/software driver installation instructions for Gigabit PCI adapter.

1.1 System Requirements

- Pentium compatible processor 200 MHz and above
- 32 MB system memory or more
- 30 MB free space on your hard drive
- CD-ROM drive
- One available PCI slot
- Microsoft Windows NT4.0, Windows 98/98SE, Windows ME, Windows 2000, Windows XP, DOS, Linux, and Netware x.

1.2 Package Contents

- One Gigabit PCI Adapter
- Gigabit PCI Adapter Installation CD disk

If any of above items is missing or damaged, please contact your local dealer immediately.

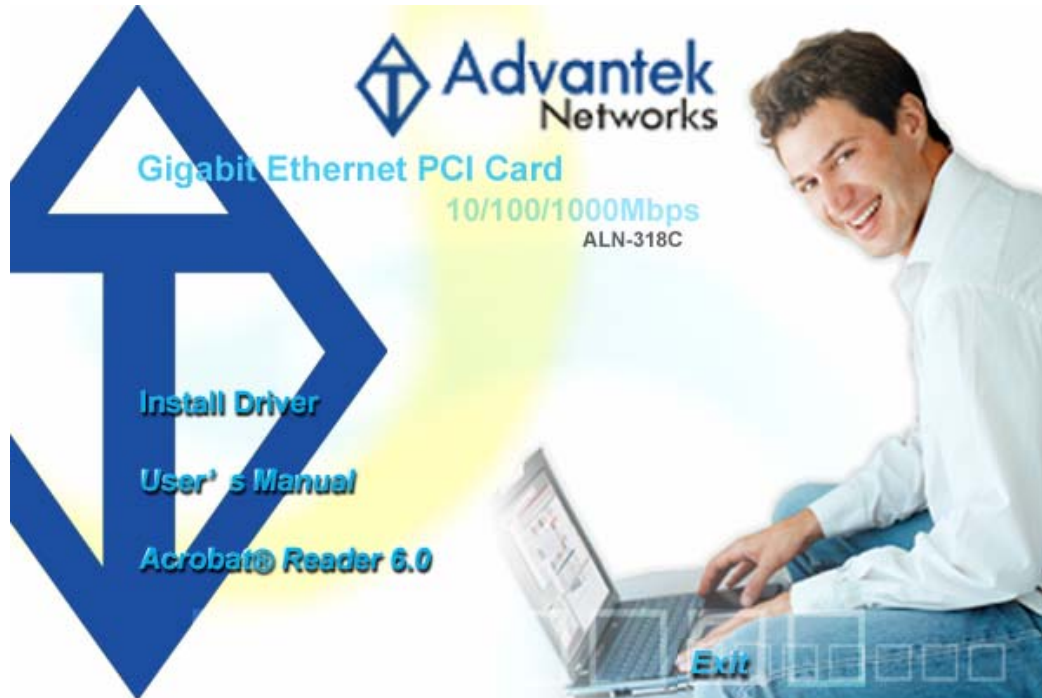
2. Hardware Installation Instructions

- 1) Turn off computer and remove its cover.
- 2) Insert the contact edge of the adapter card into the connector of any available PCI Bus master expansion slot. Press the card firmly into the connector to PCI slot. Please make sure the card's contacts are fully seated in the PCI slot.
- 3) Install the bracket screw that secures the card to the Computer chassis.
- 4) Replace the computer's cover.
- 5) Connect the Gigabit NIC card to the network with Ethernet Cable.
- 6) Turn on the computer.

3. Software Driver Installation

3.1 Gigabit PCI Adapter Software Driver Installation Procedures

Insert Gigabit PCI Adapter Installation CD into CD-ROM drive then window below will appear.



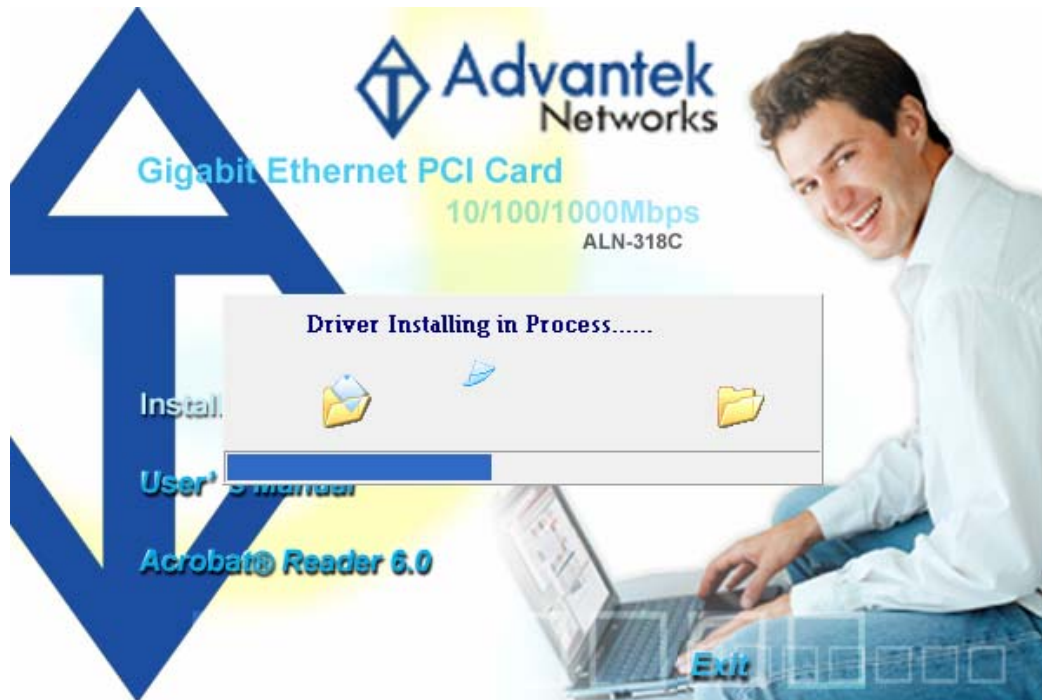
Install Driver: Click Install Driver to start Gigabit PCI Adapter installation process.

User Manual: Click User Manual to open Gigabit PCI Adapter User Manual

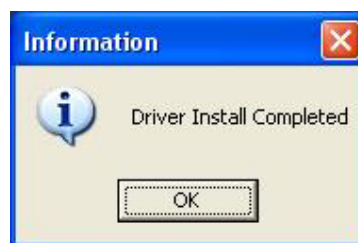
Acrobat® Reader 6.0: Adobe Reader 6.0 software to support PDF format file.

3.1.1 For Windows ME, 2000 and XP

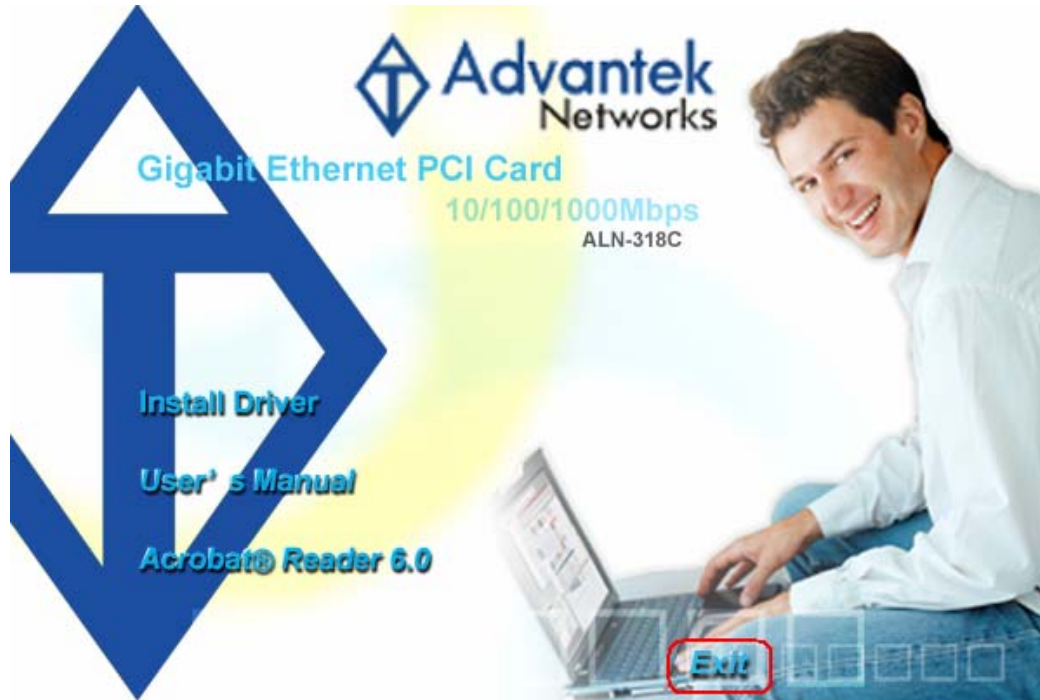
- 1) Once click **Install Driver** to start the Gigabit PCI Adapter installation, window below will appear



- 2) After Gigabit PCI Adapter Installation Utility finishes installing corresponding Gigabit PCI Adapter device driver, window below will appear. Click **OK** to complete the installation process.



- 3) Click **Exit** to close Gigabit PCI Adapter Installation Utility.



- 4) To check if Gigabit PCI Adapter is properly installed:

For Windows XP

- (a) Right-click "**My Computer**" on the Desktop
- (b) Choose "**Properties**"
- (c) Choose "**Hardware**" tab
- (d) Click "**Device Manager...**"

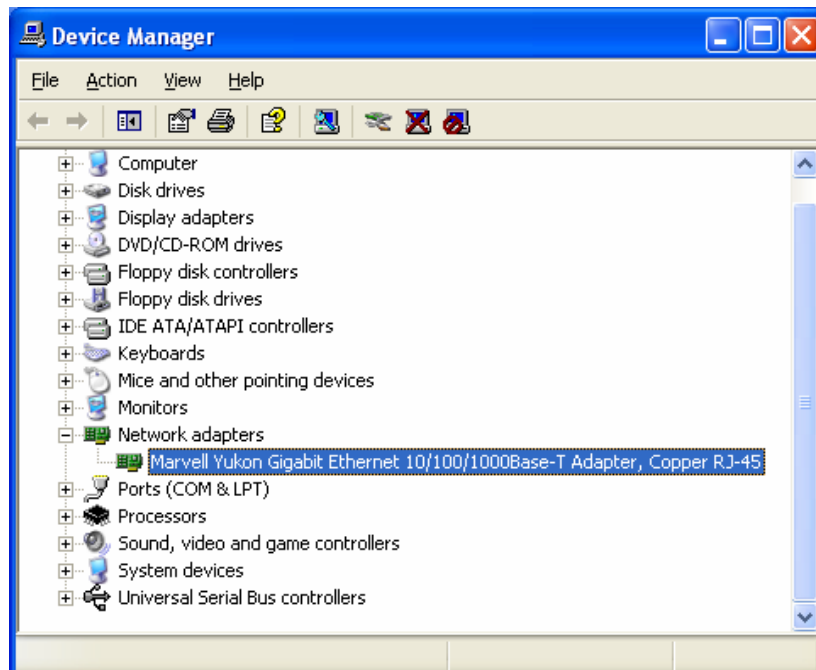


Figure 1 - Marvell Gigabit PCI Adapter

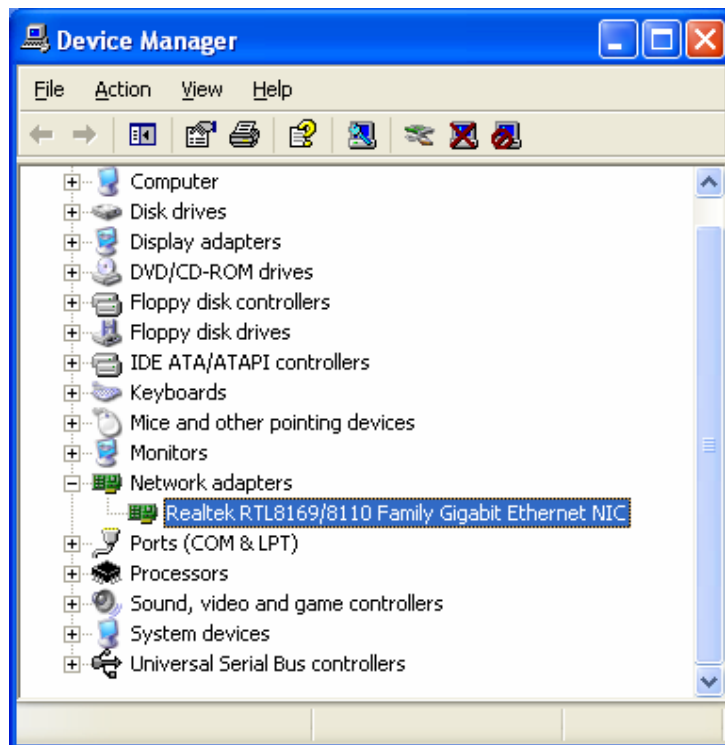


Figure 2 - Realtek Gigabit PCI Adapter

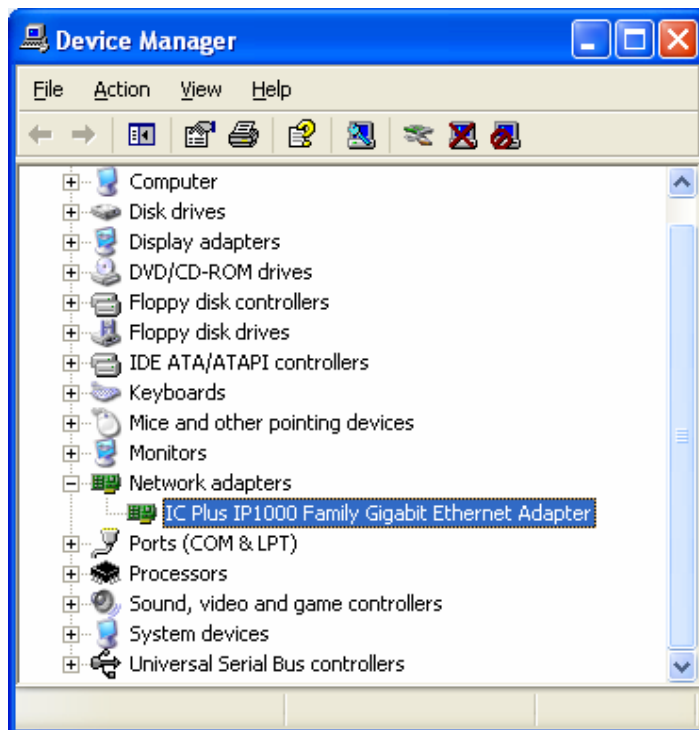
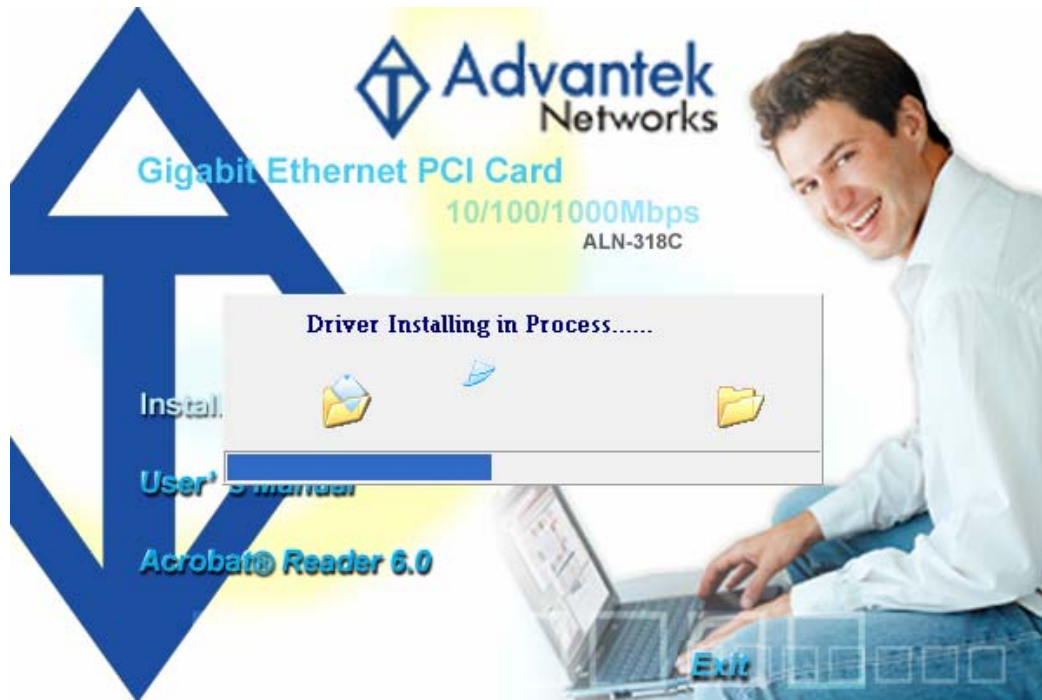


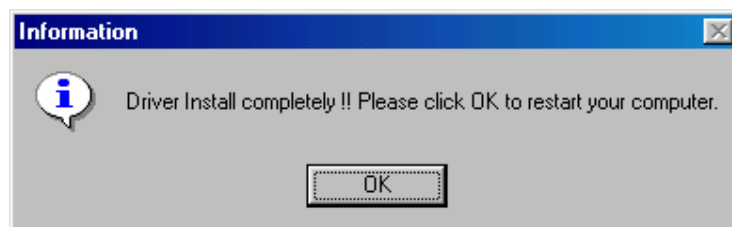
Figure 3 – IC Plus Gigabit PCI Adapter

3.1.2 For Windows 98SE

- 1) Once click **Install Driver** to start the Gigabit PCI Adapter installation, window below will appear:



- 2) After Gigabit PCI Adapter Installation Utility finishes copying Gigabit PCI Adapter device driver, window below will appear then click **OK** to reboot your system.



3) For <Marvell> & <Realtek> Gigabit PCI Adapters:

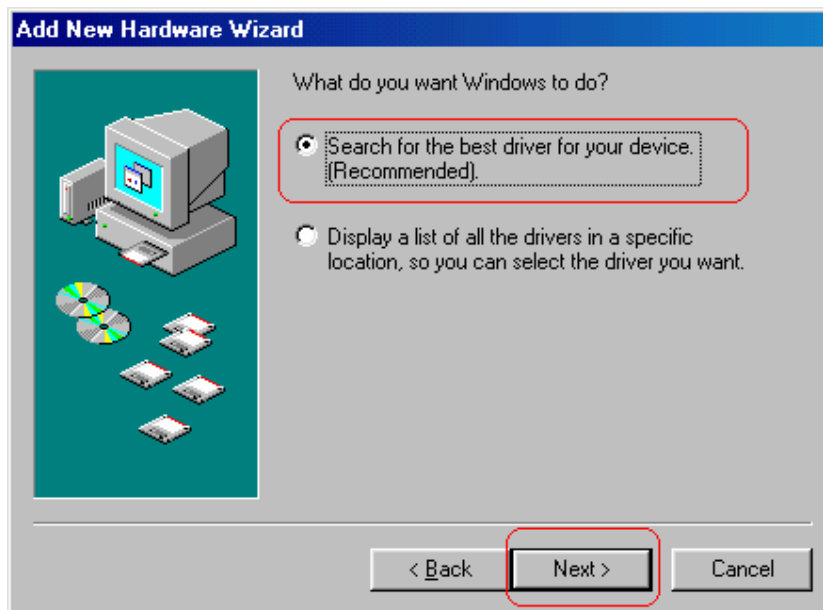
→ After system boots up, the device driver will be installed completely.

For <IC Plus > Gigabit PCI Adapters:

- (a) After system boots up, operating system will detect the recently installed Gigabit PCI adapter, window below will appear then click **Next** to continue.



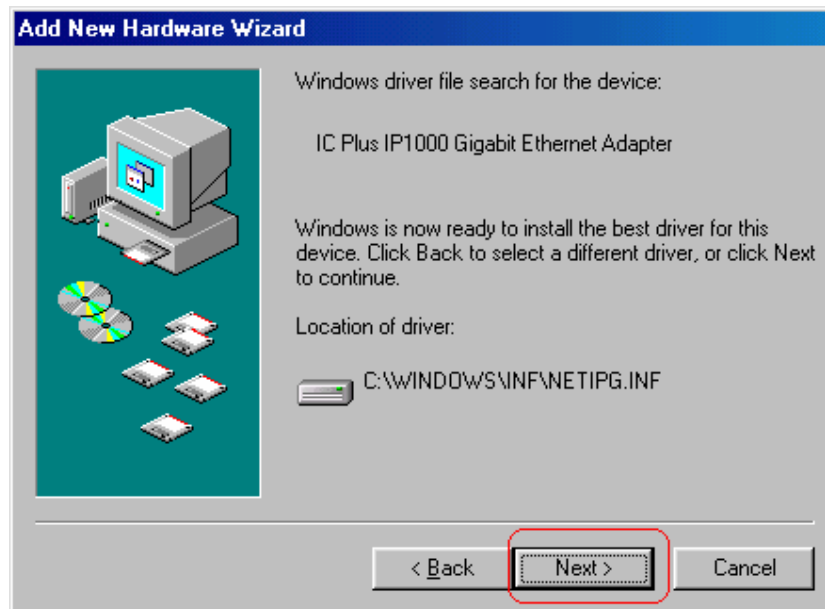
- (b) Click **Next** to continue,



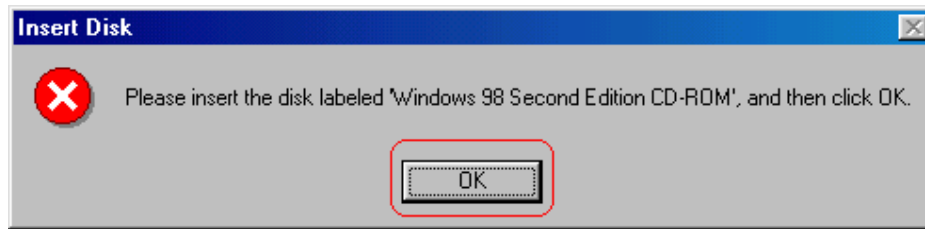
- (c) Select **Specify a location** (utility automatically gives driver location, so you don't have to enter the driver location path) then click **Next** to continue,



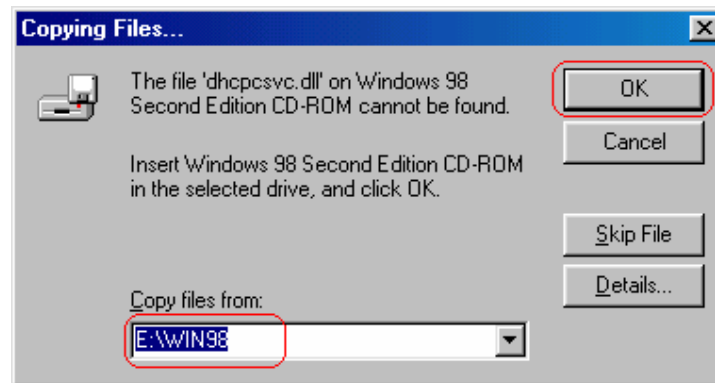
- (d) Click **Next** to continue,



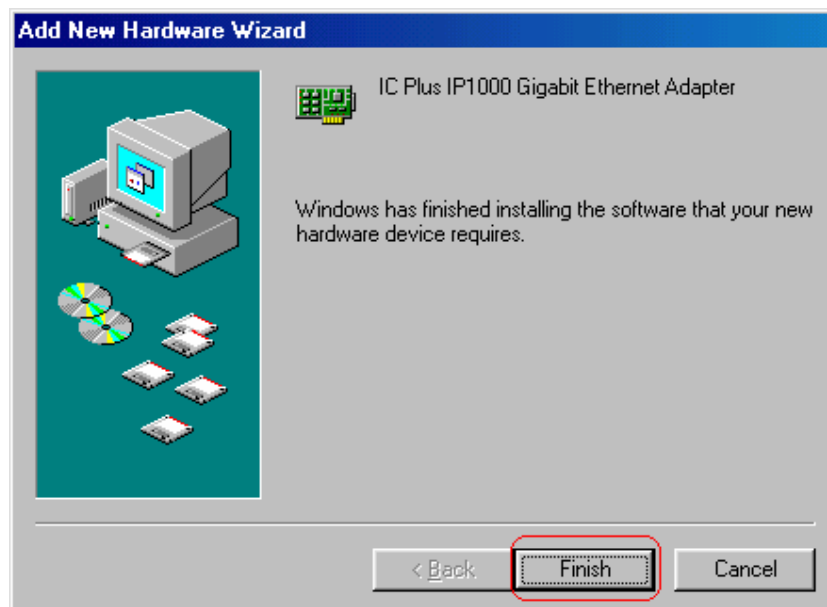
- (e) For Windows 98SE, system will ask you to insert Windows 98SE installation CD, Please insert the CD and click “OK”,



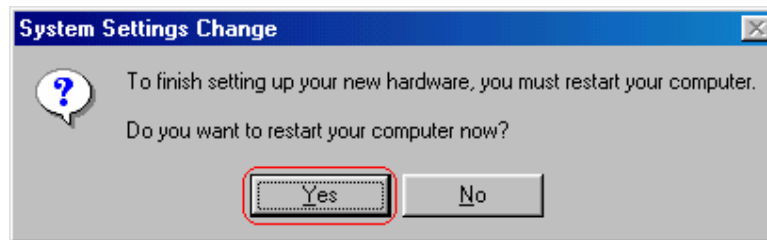
- (f) Enter correct file path and click “OK”,



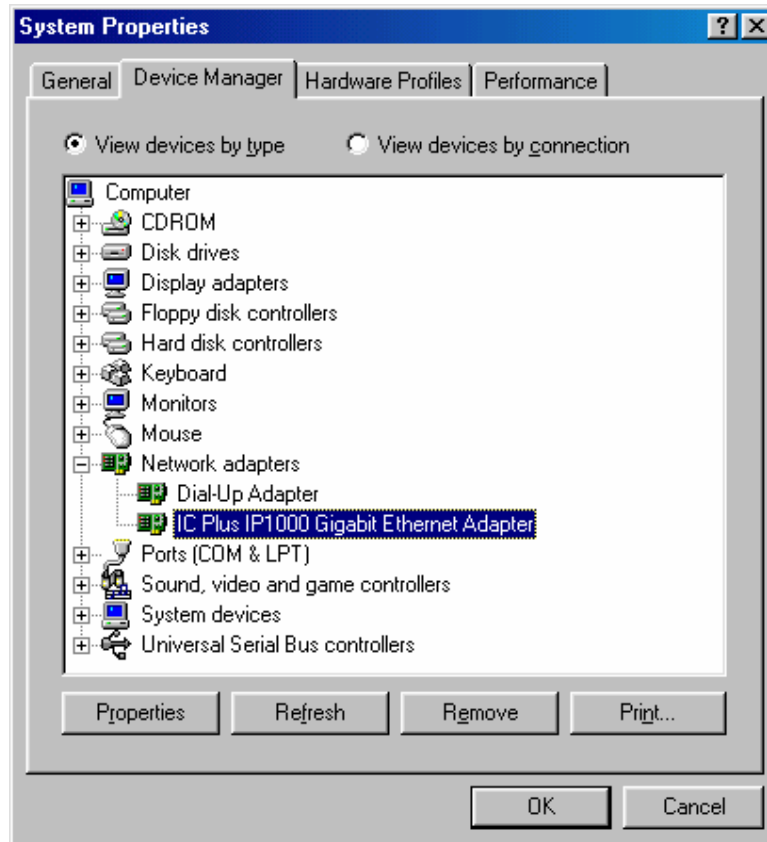
- (g) After operating system finishes installing the Gigabit PCI Adapter driver, click **Finish** to complete the device driver installation,



- (h) To finish setting up your new device driver installation, operating system will show message and ask to restart your computer. Click “**Yes**” to complete the System Settings Change.



- (i) To check if Gigabit PCI Adapter is properly installed:
- i. Right-click “**My Computer**” on the Desktop
 - ii. Choose “**Properties**”
 - iii. Click “**Device Manager...**”



3.1.3 For Windows 98 First Edition < For IC PLUS/Realtek>

When system boots up first time with new Gigabit PCI adapter presents, Windows operation system will detect new hardware and ask for hardware driver.

Put Gigabit PCI Adapter driver install CD from product package into CD-ROM drive and go to device driver CD Location, and then find your new Gigabit PCI Adapter device driver.

Example:

For **IC Plus** → E:\DRIVER\IC PLUS\WIN98_1ST

For **Realtek** → E:\DRIVER\REALTEK\WIN98_1ST

Follow the instruction windows to complete the installation.

3.1.4 For Windows NT4.0

- 1) Login to NT4.0 after install new Gigabit PCI Adapter.
- 2) Put Gigabit PCI Adapter installation CD from product package into CD-ROM drive and go to device driver CD location, and then find your new Gigabit PCI Adapter device driver.

Example:

For **IC Plus** → E:\DRIVER\IC PLUS\NT4.0

For **Marvell** → E:\DRIVER\MARVELL\NT4.0

For **Realtek** → E:\DRIVER\REALTEK\NT4.0

- 3) Follow the installation instructions in Readme.txt to complete the installation.

3.1.5 For DOS <Marvell ONLY>

- 1) Go to DOS after insert Marvell Gigabit PCI Adapter.
- 2) Put Gigabit PCI Adapter installation CD from product package into CD-ROM drive and go to device driver CD location, and then find Marvell Gigabit PCI Adapter device driver:

Example: E:\DRIVER\MARVELL\DOS

- 3) Follow the installation instructions in “**yukodi.txt**” to complete the installation.

3.1.6 For Linux

- 1) Login to Linux after install new Gigabit PCI Adapter.
- 2) Put Gigabit PCI Adapter installation CD from product package into CD-ROM drive and go to device driver CD location, and then find your new Gigabit PCI Adapter.

Example:

For **IC Plus** → E:\DRIVER\IC PLUS\Linux_Kernel 2.6.X_2.4.X

For **Marvell** → E:\DRIVER\MARVELL\ LINUX

For **Realtek** → E:\DRIVER\REALTEK\LINUX \linux.2.4.x-8169s(160)0915NT4.0

- 3) Follow the installation instructions in Readme.txt to complete the installation.

PS: **Marvell** Linux driver must with **Kernel 2.4.x version**. Please un-zip the “**install-614.tar.bz2**”, and then read the ReadMe file which includes in this file and follow the instructions.

3.1.7 For Netware x <For Marvell ONLY>

- 1) Login to Netware x after install Marvell Gigabit PCI Adapter.
- 2) Put Gigabit PCI Adapter installation CD from product package into CD-ROM drive and go to device driver CD location, and then find Marvell Gigabit PCI Adapter device driver.

Example: E:\DRIVER\MARVELL\MARVELL SERVER\yukonnw_x_vxxxx

- 3) Follow the installation instruction in “**yukonnw.txt**” to complete the installation.

3.2 If you have trouble to install Gigabit PCI Adapter on your system, please contact us.

Before contacting us, make sure collect following information. With complete information of your problem, we will provide you accurate answers.

Model Name:

Serial Number:

PC Settings:

Other: