

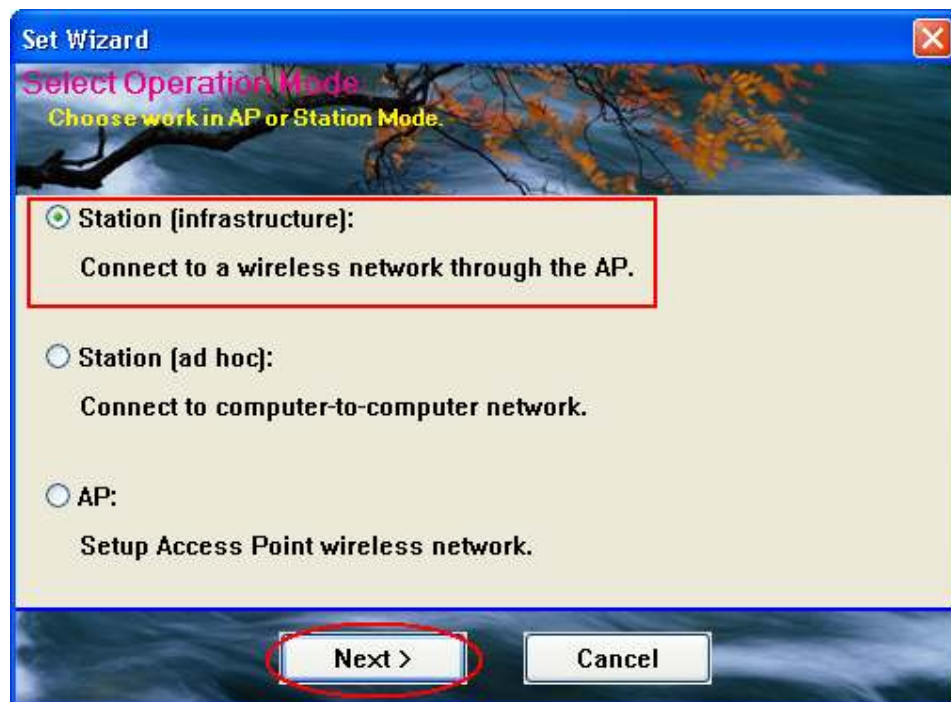


**Adaptador Inalambrico USB
Wireless –G Range Extra**

Guía de Instalación Rápida

Modelo # AWN-11G-USB

1. Selecciona **Set Wizard(S)** luego selecciona **Station (infrastructure)** luego click **Next>**



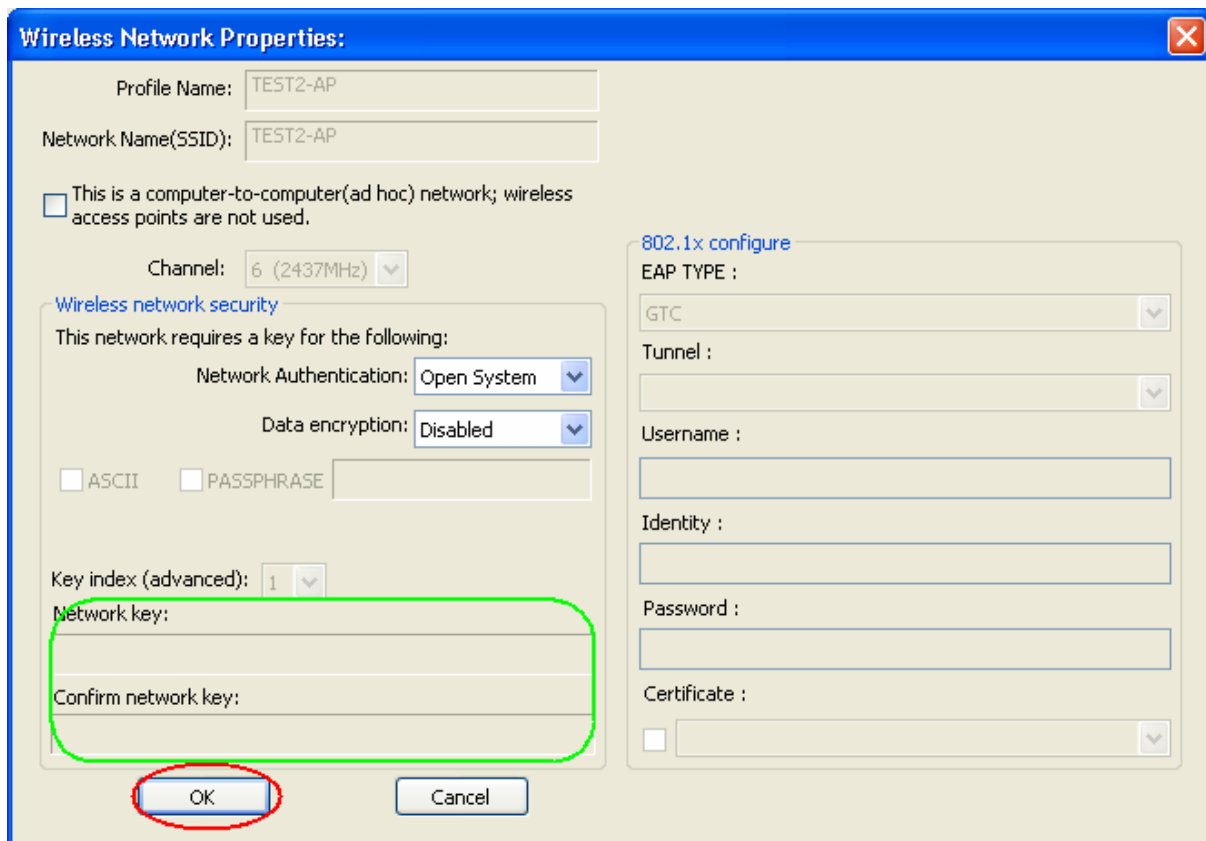
2. Dentro de las opciones puedes acceder al Ruteador o al AP, puedes buscarlos haciendo click en el boton de **Refresh** para buscar redes inalámbricas. Selecciona al que te quieres conectar y da click en **Next>**.



3. Click **OK**



4. Click **OK** para conectarte
Si se necesita clave, insertala en el campo de password. Click **OK** para conectarte.



5. Click **Finish**.

The screenshot shows a 'Set Wizard' window titled 'Setup TCP/IP' with a subtitle 'Chooses automatic or manual obtains IP'. The window is divided into two sections: 'TCP/IP' and 'DNS'. In the 'TCP/IP' section, the 'Obtain an IP address automatically' radio button is selected. Below it are input fields for 'IP Address', 'Subnet Mask' (pre-filled with '255 . 255 . 255 . 0'), and 'Default gateway'. In the 'DNS' section, the 'Obtain DNS server address automatically' radio button is selected. Below it are input fields for 'Preferred DNS server' and 'Alternate DNS server'. At the bottom of the window, there are two buttons: '< Back' and 'Finish'. The 'Finish' button is circled in red.

Set Wizard ✕

Setup TCP/IP
Chooses automatic or manual obtains IP

TCP/IP

Obtain an IP address automatically

Use the following IP address:

IP Address:

Subnet Mask:

Default gateway:

DNS

Obtain DNS server address automatically

Use the following DNS server addresses:

Preferred DNS server:

Alternate DNS server: